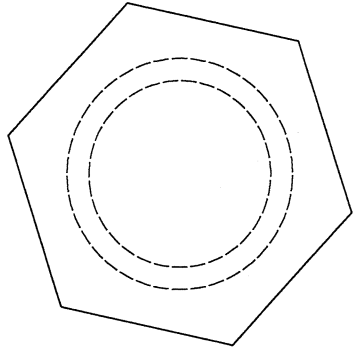
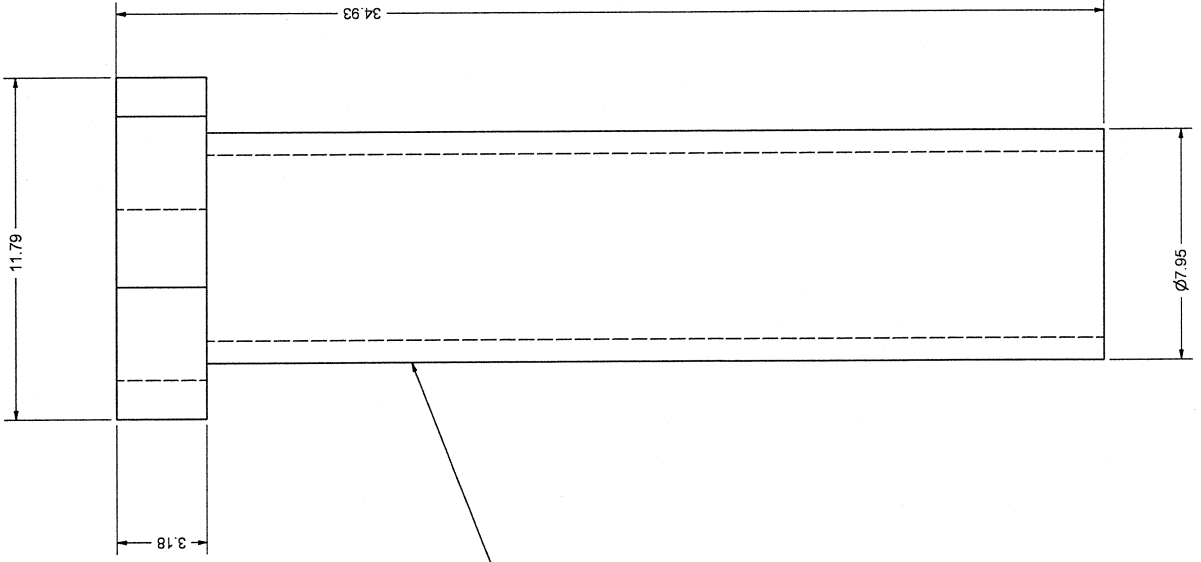
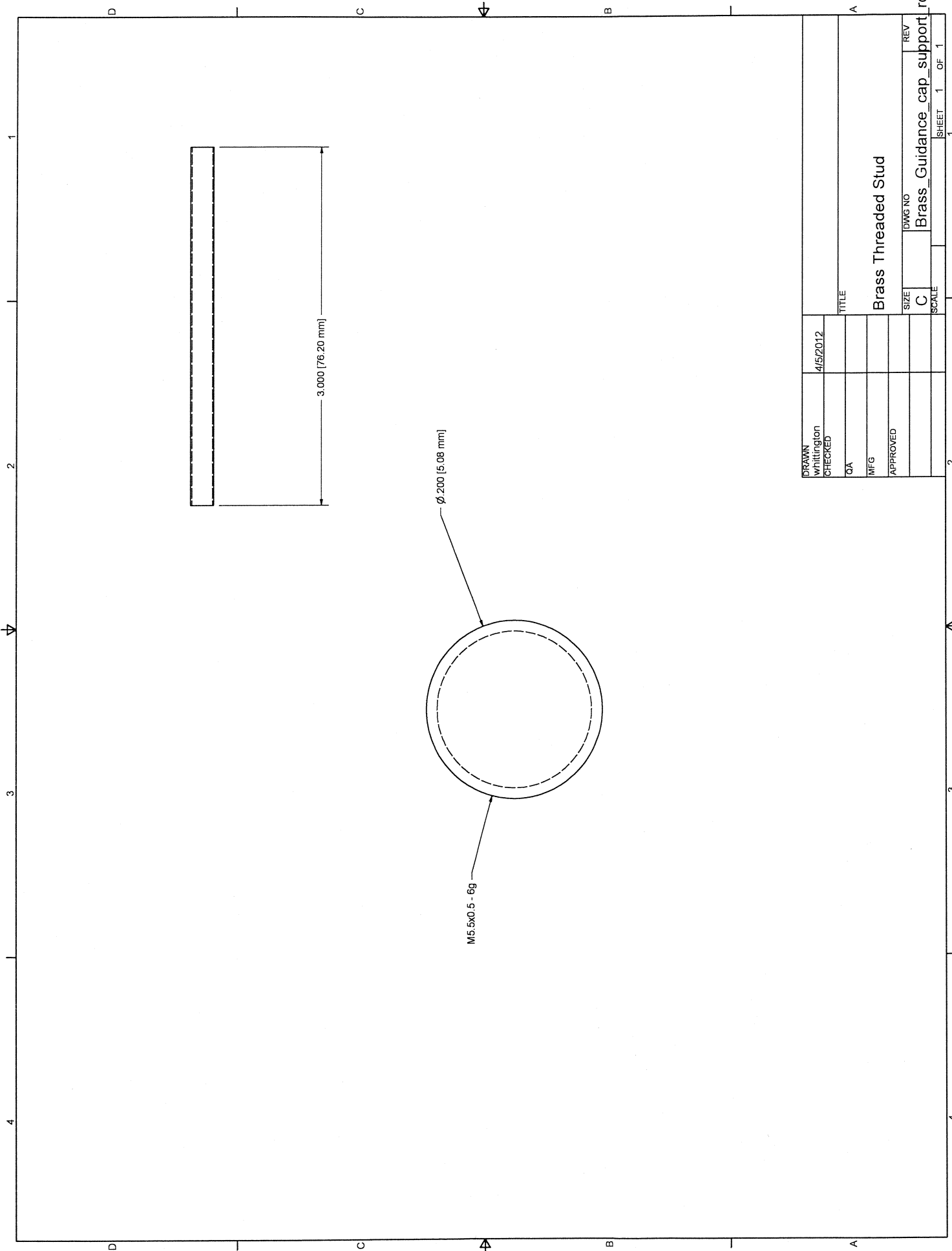


DRAWN Whittington	4/5/2012	TITLE	
CHECKED			
QA			
MFG			
APPROVED			
		SIZE	DWG NO
		C	Bolt for G_10_top_flange
		SCALE	REV
			1
			SHEET 1 OF 1

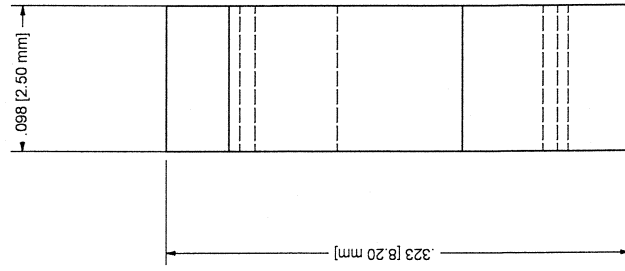
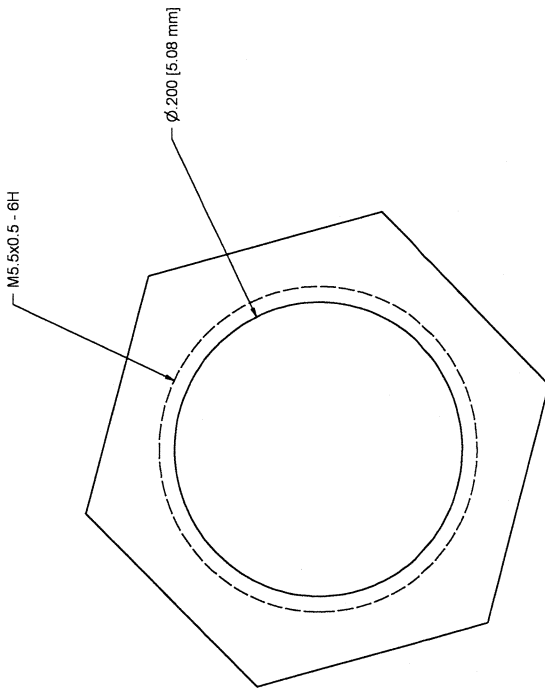
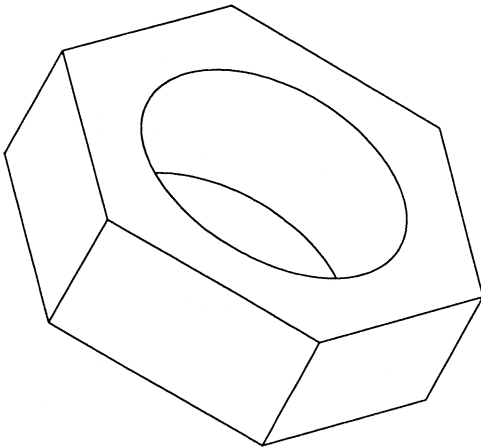
Stainless Bolt

-3/8-16 UNC - 1A

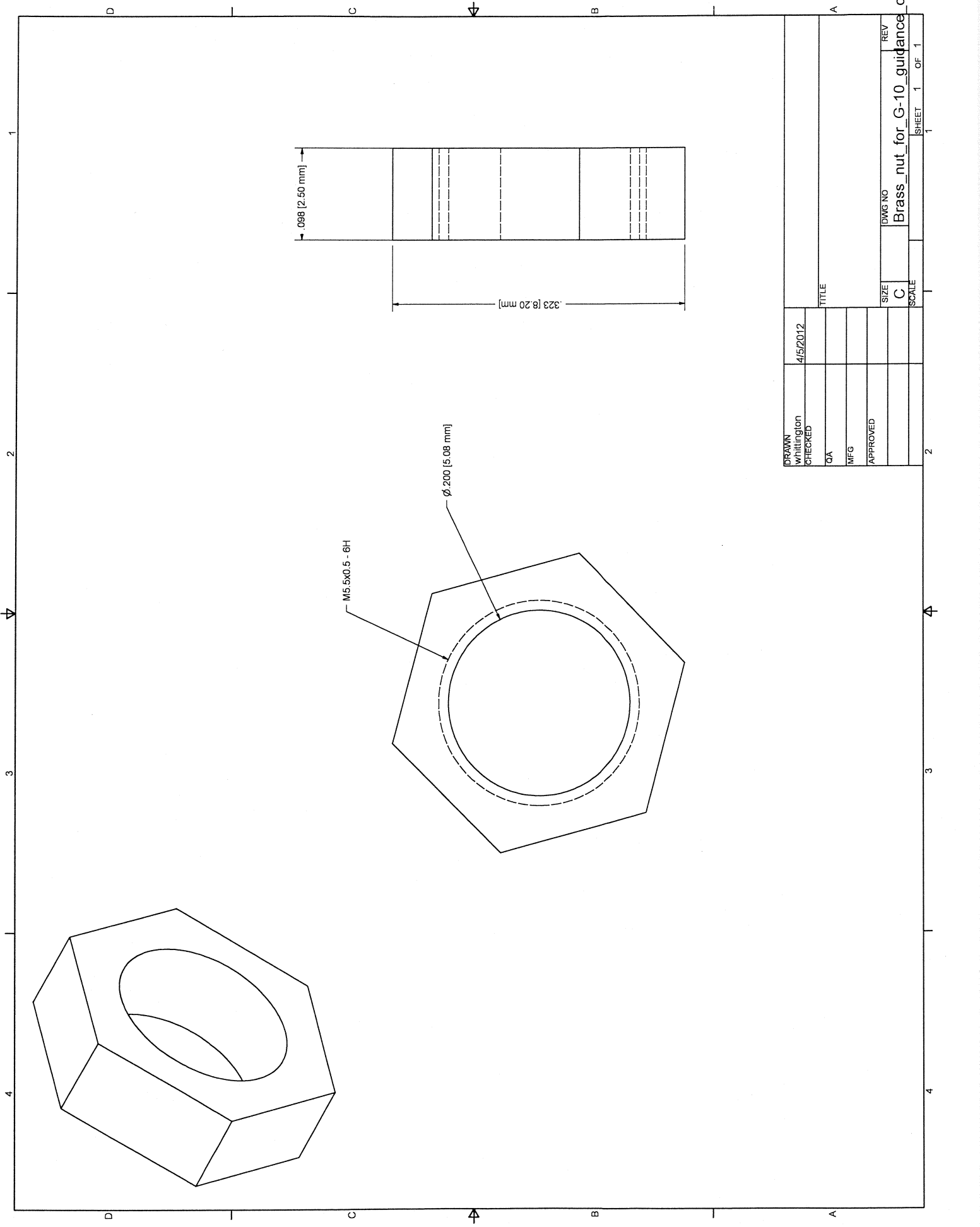


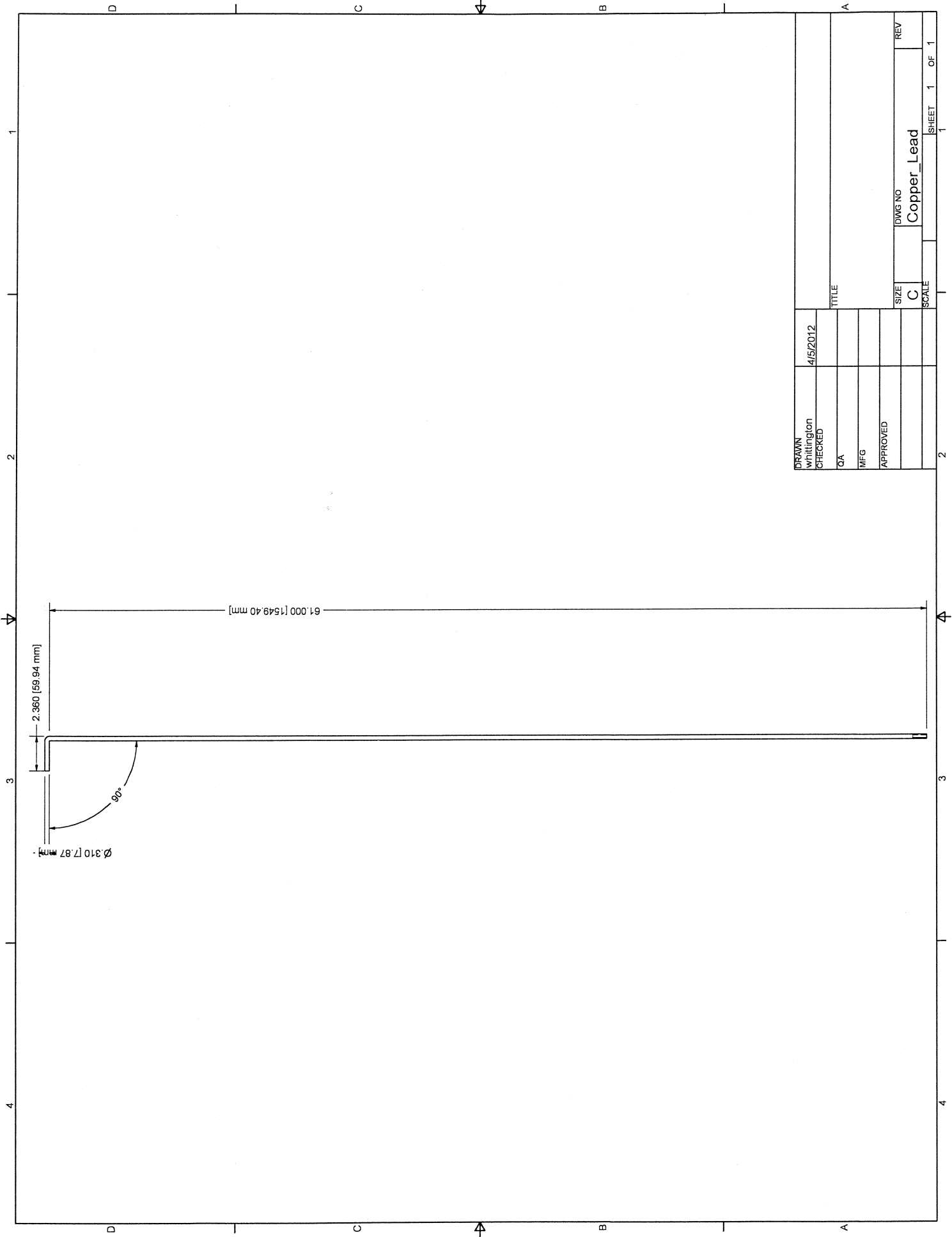


DRAWN Whitington	4/5/2012	TITLE	
CHECKED		Brass Threaded Stud	
QA		SIZE	REV
MFG		C	
APPROVED		DWG NO	Brass_Guidance_cap_support_rod
		SCALE	SHEET 1 OF 1

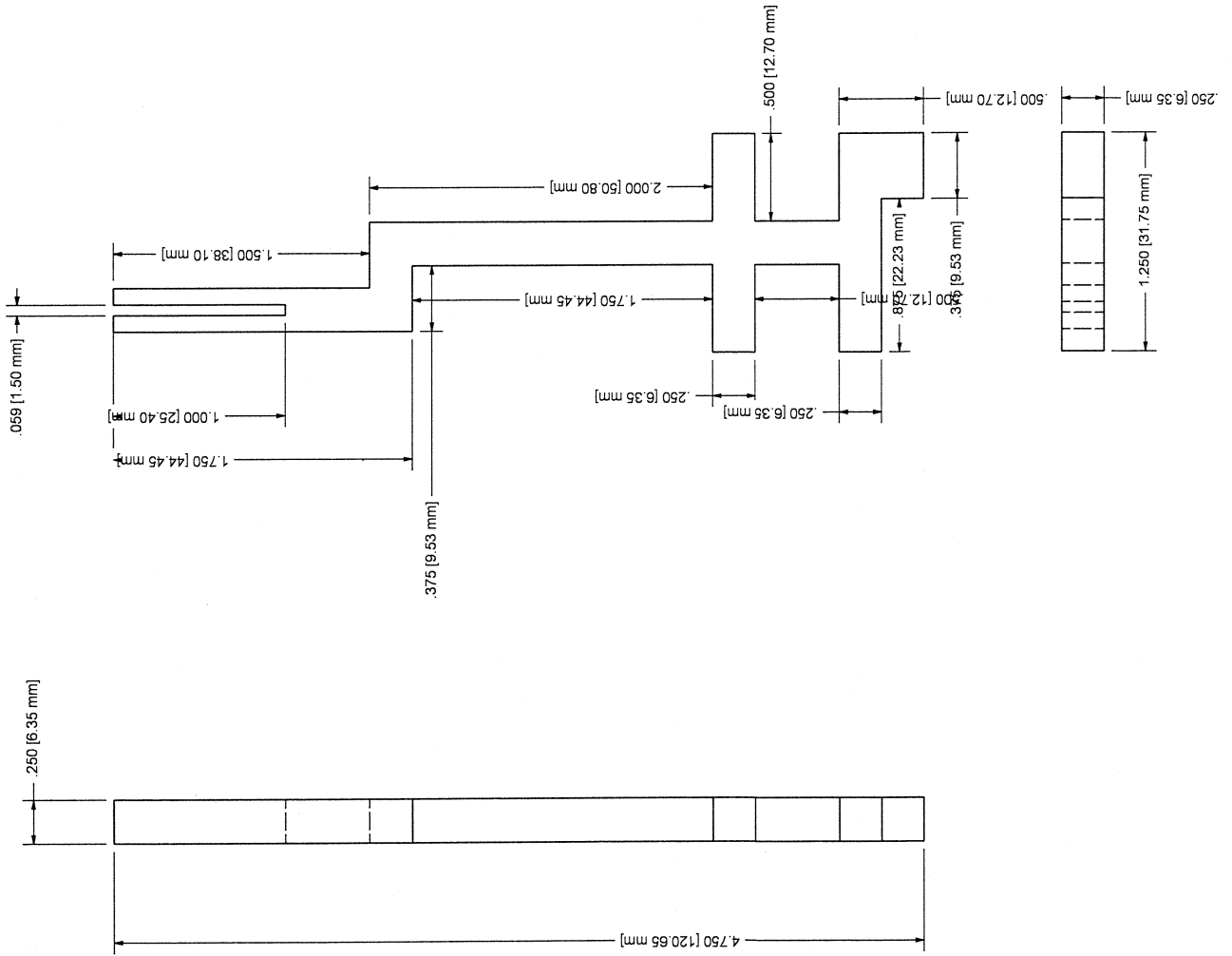
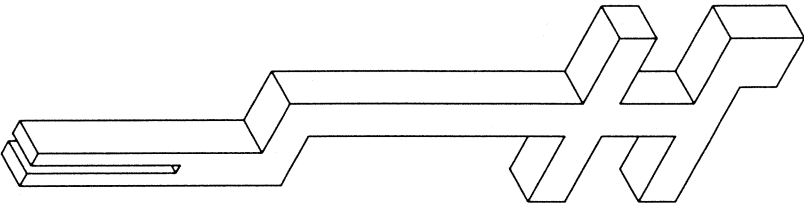


DRAWN Whittington	4/5/2012	TITLE	REV
CHECKED			
QA			
MFG			
APPROVED			
		SIZE C	DWG NO Brass_nut_for_G-10_guidance_cap_r
		SCALE	SHEET 1 OF 1

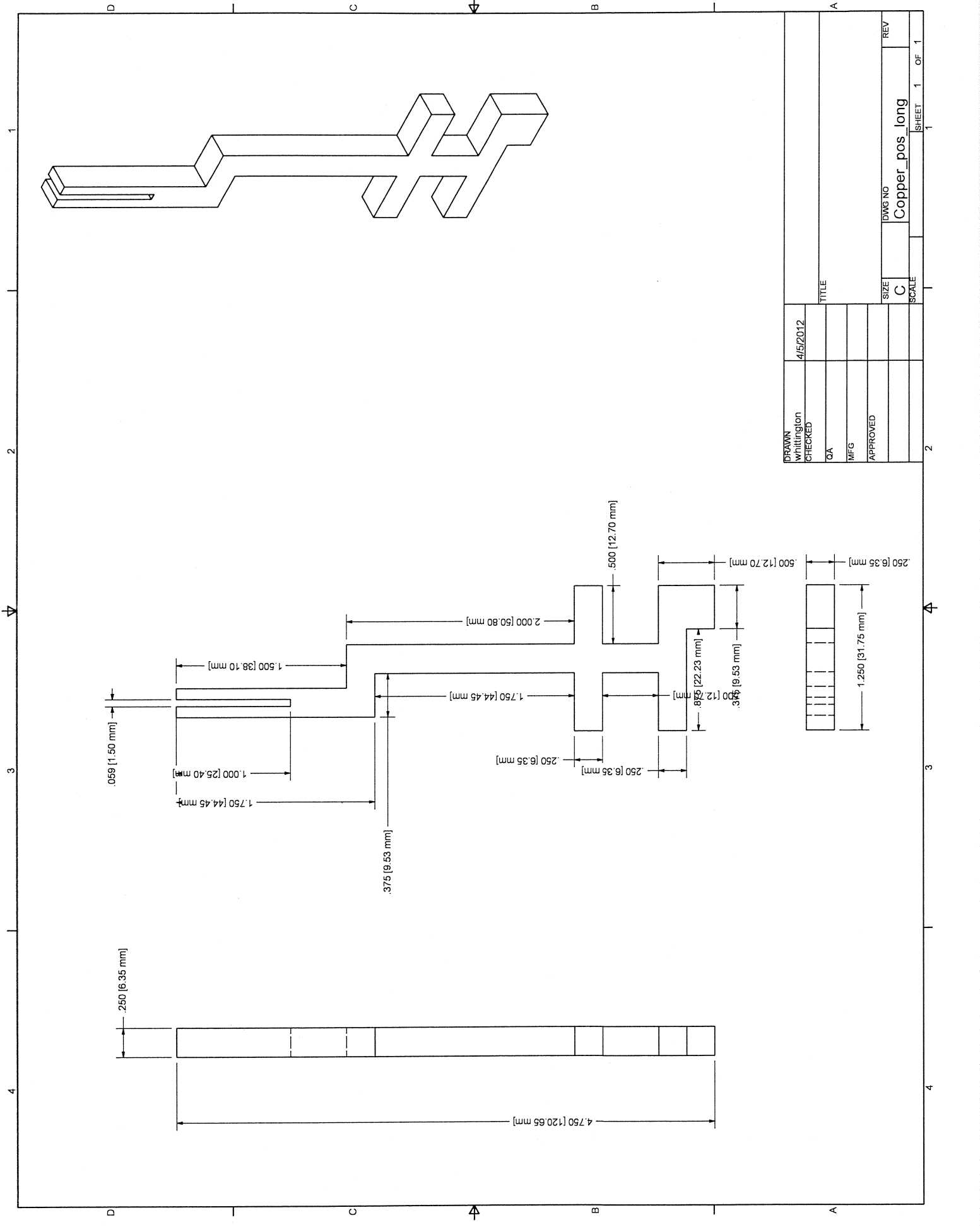


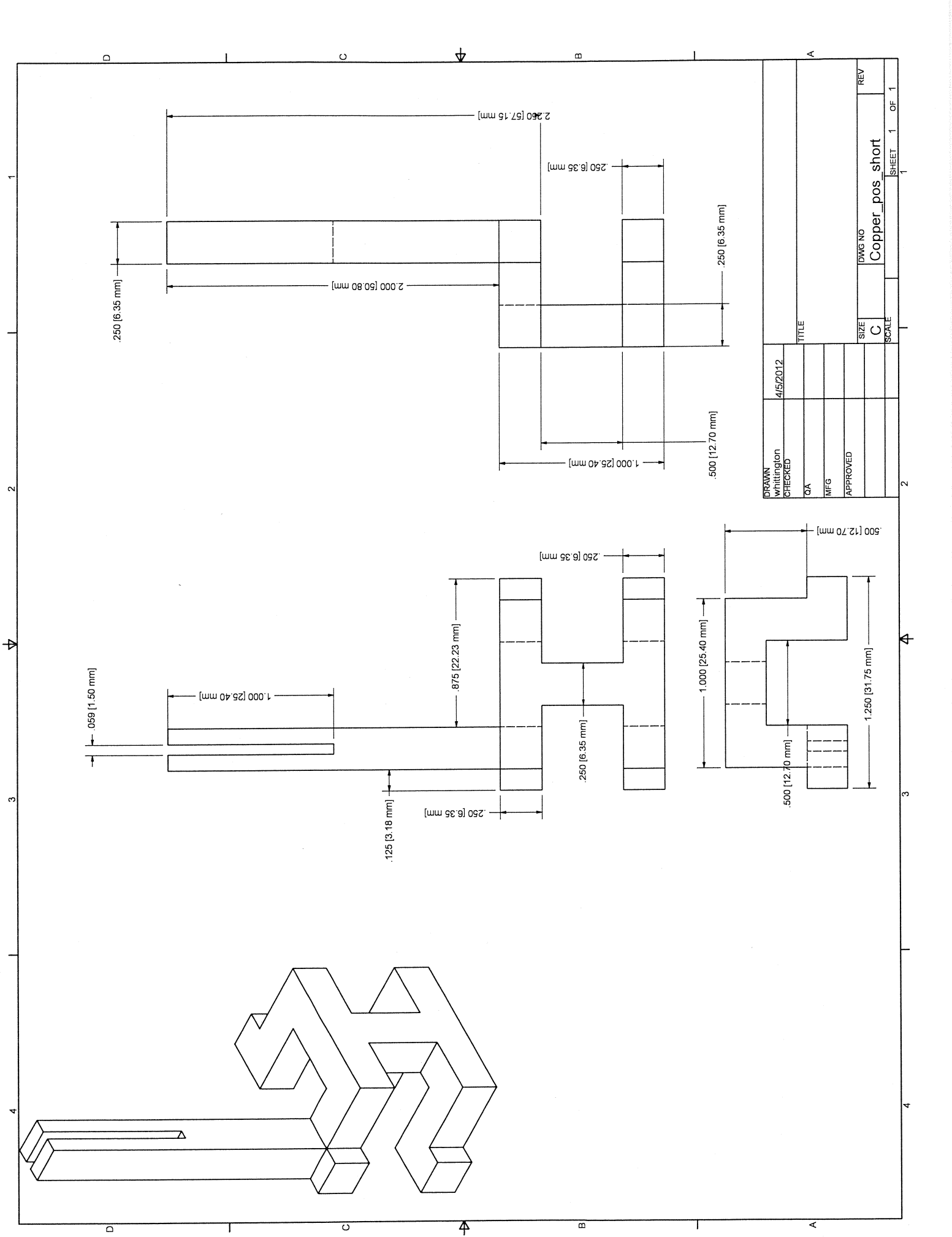


DRAWN Whittington	4/5/2012	TITLE	SCALE	SHEET	1	OF	1
CHECKED							
QA							
MFG							
APPROVED							
		SIZE	DWG NO	REV			
		C	Copper_Lead				

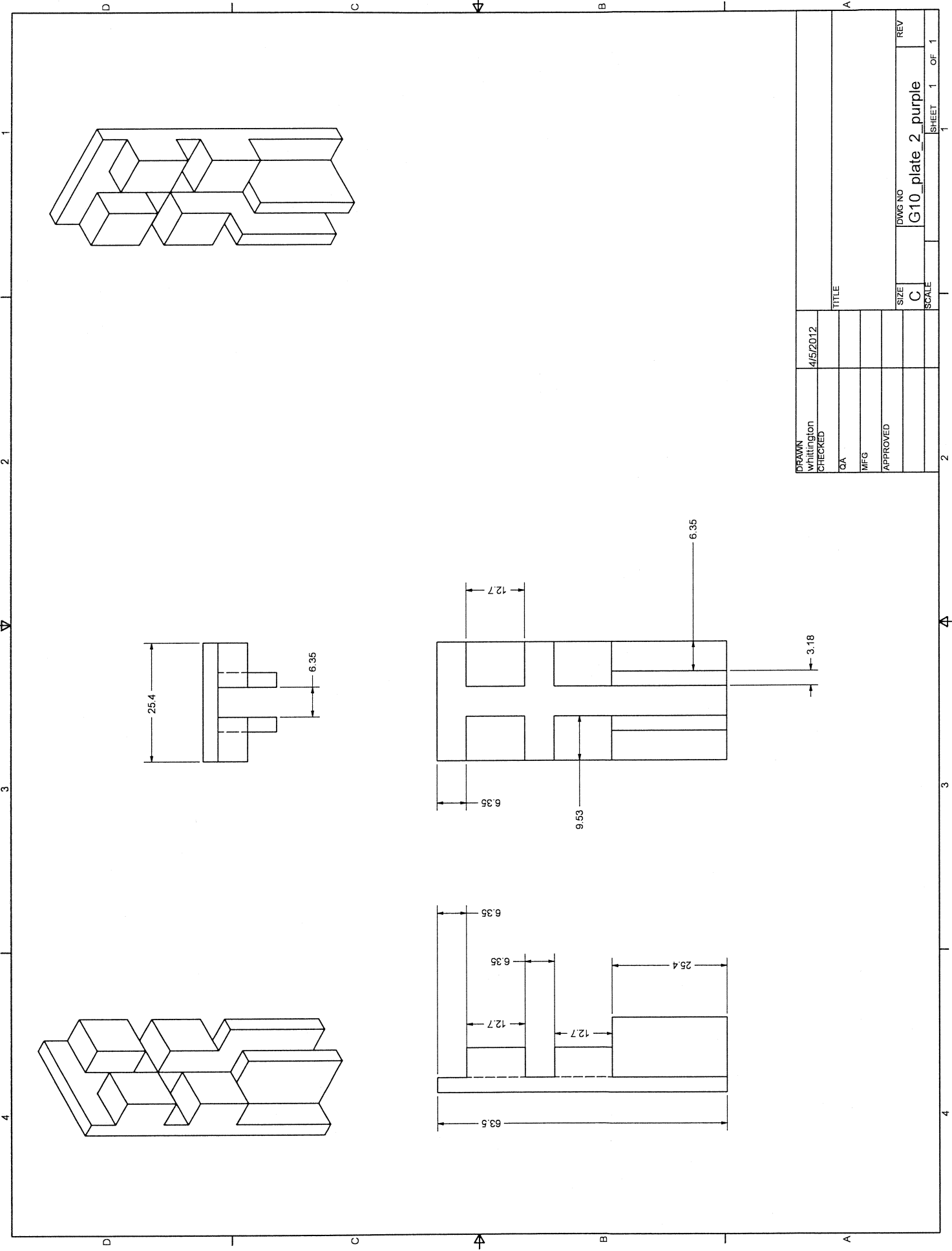


DRAWN Whittington	4/5/2012	TITLE	SIZE C	DWG NO Copper_pos long	REV
CHECKED			SCALE		
QA					
MFG					
APPROVED					
				SHEET 1	OF 1

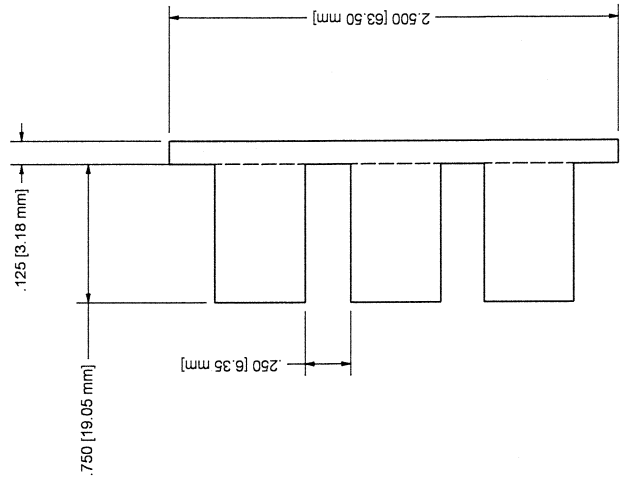
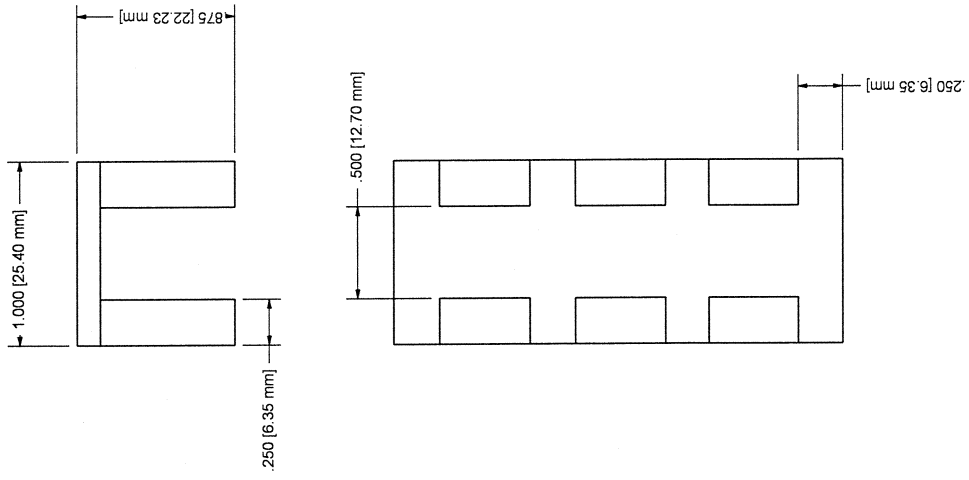
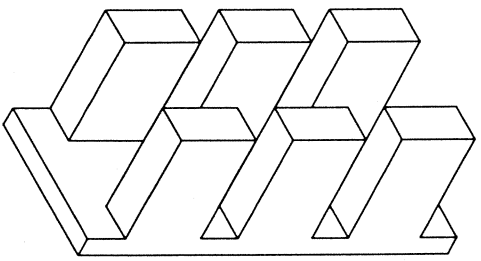




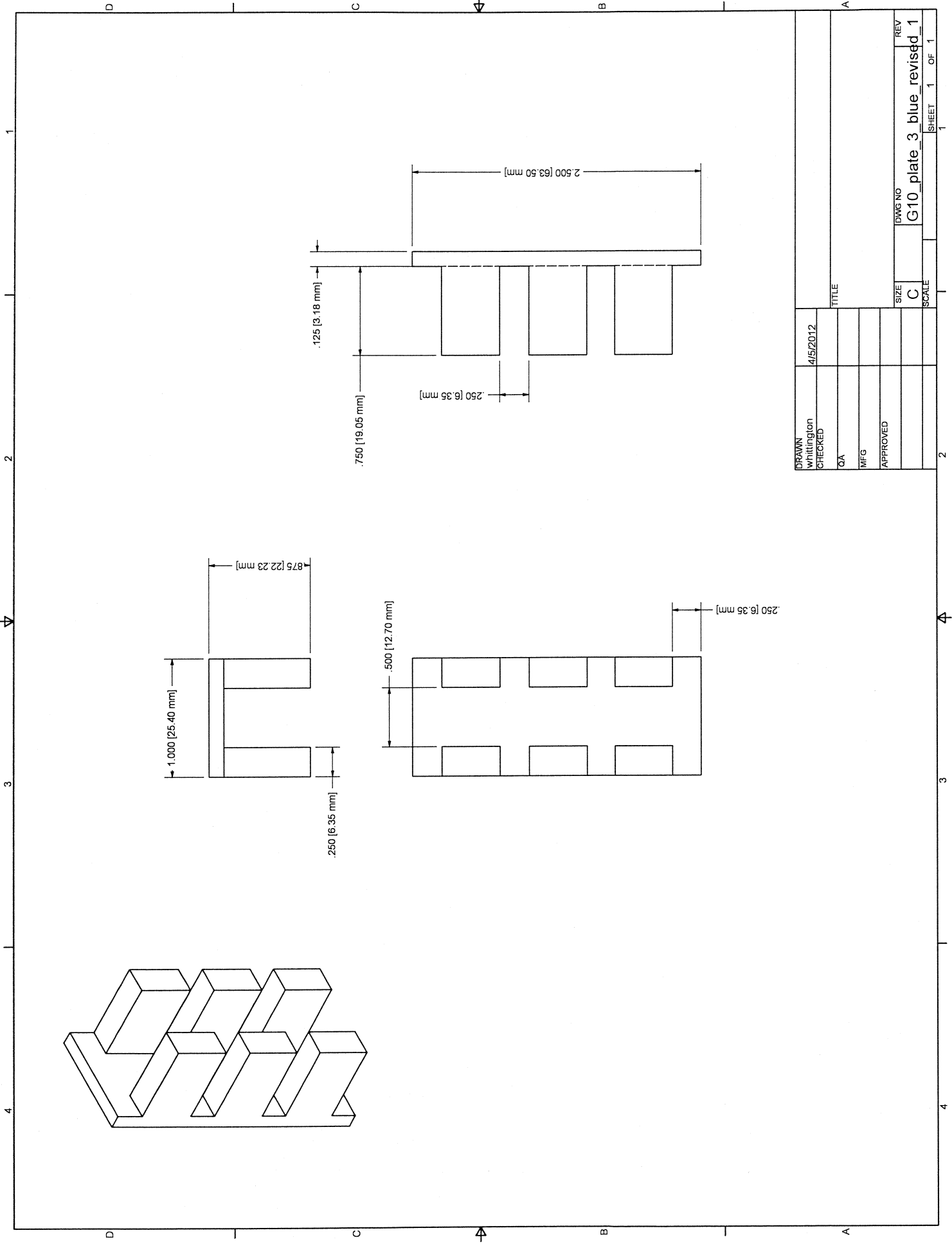
DRAWN Whittington		4/5/2012		TITLE	
CHECKED					
QA					
MFG					
APPROVED					
				SCALE	
				SIZE C	
				DWG NO Copper_pos_short	
				REV	
				1	
				SHEET 1 OF 1	

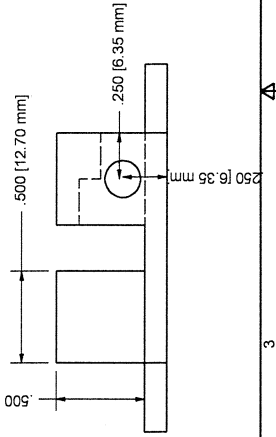
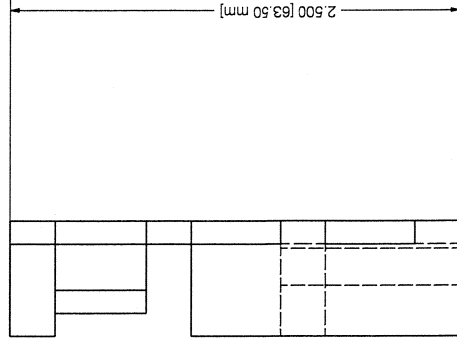
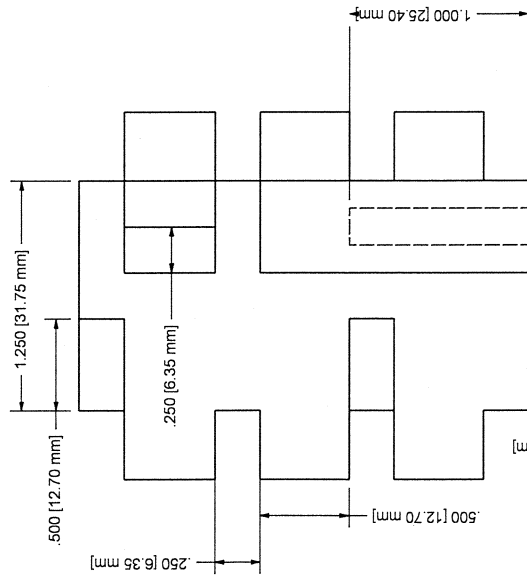
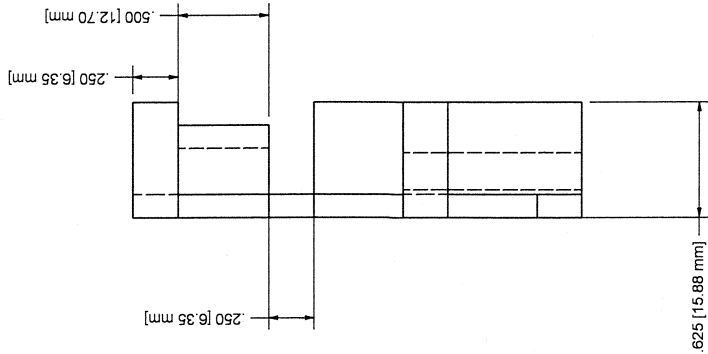
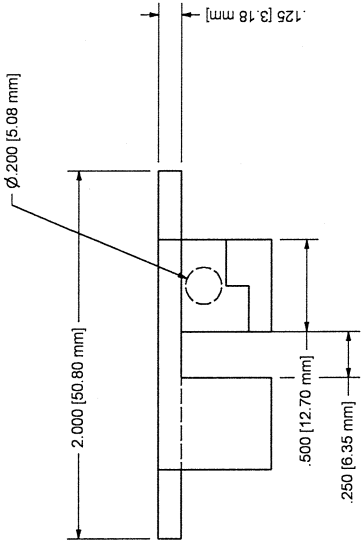
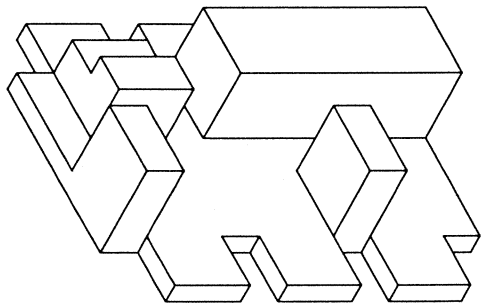
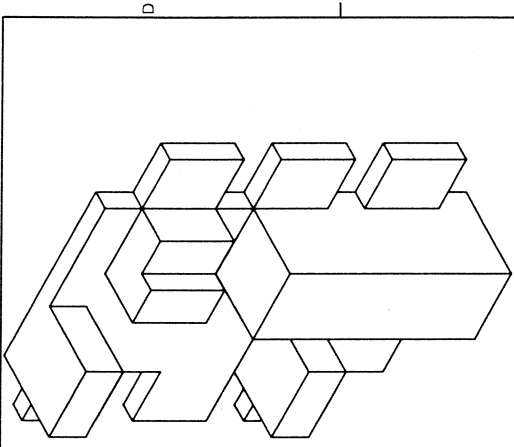


DATE	4/5/2012	TITLE	
DRAWN	Whittington	SIZE	C
CHECKED		SCALE	
QA		DWG NO	G-10_plate_2_purple
MFG		REV	
APPROVED		SHEET	1
		OF	1



DRAWN Whittington	4/5/2012	TITLE	REV
CHECKED			1
QA		SIZE C	DWG NO G10_plate 3 blue_revised_1
MFG		SCALE	SHEET 1 OF 1
APPROVED			

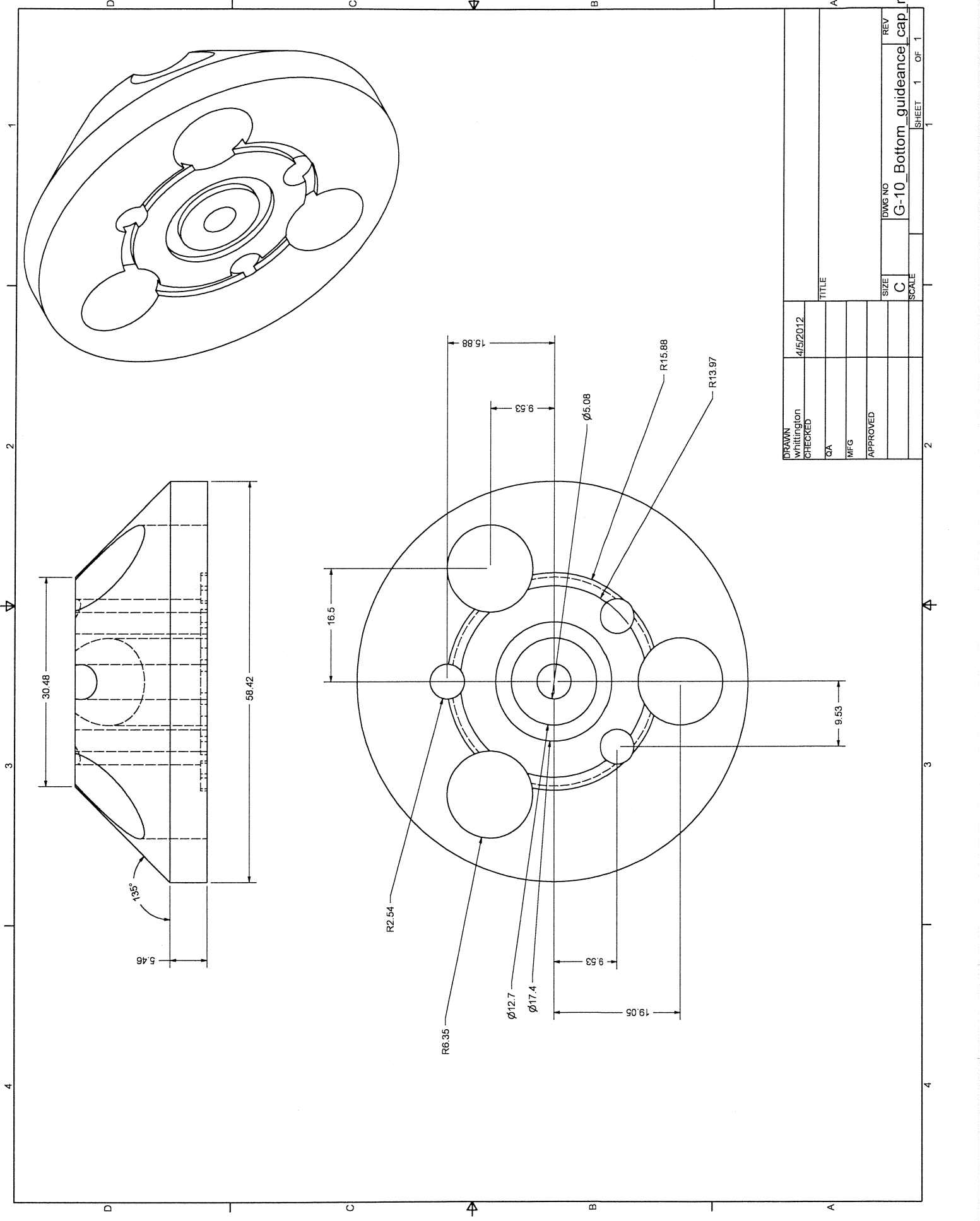




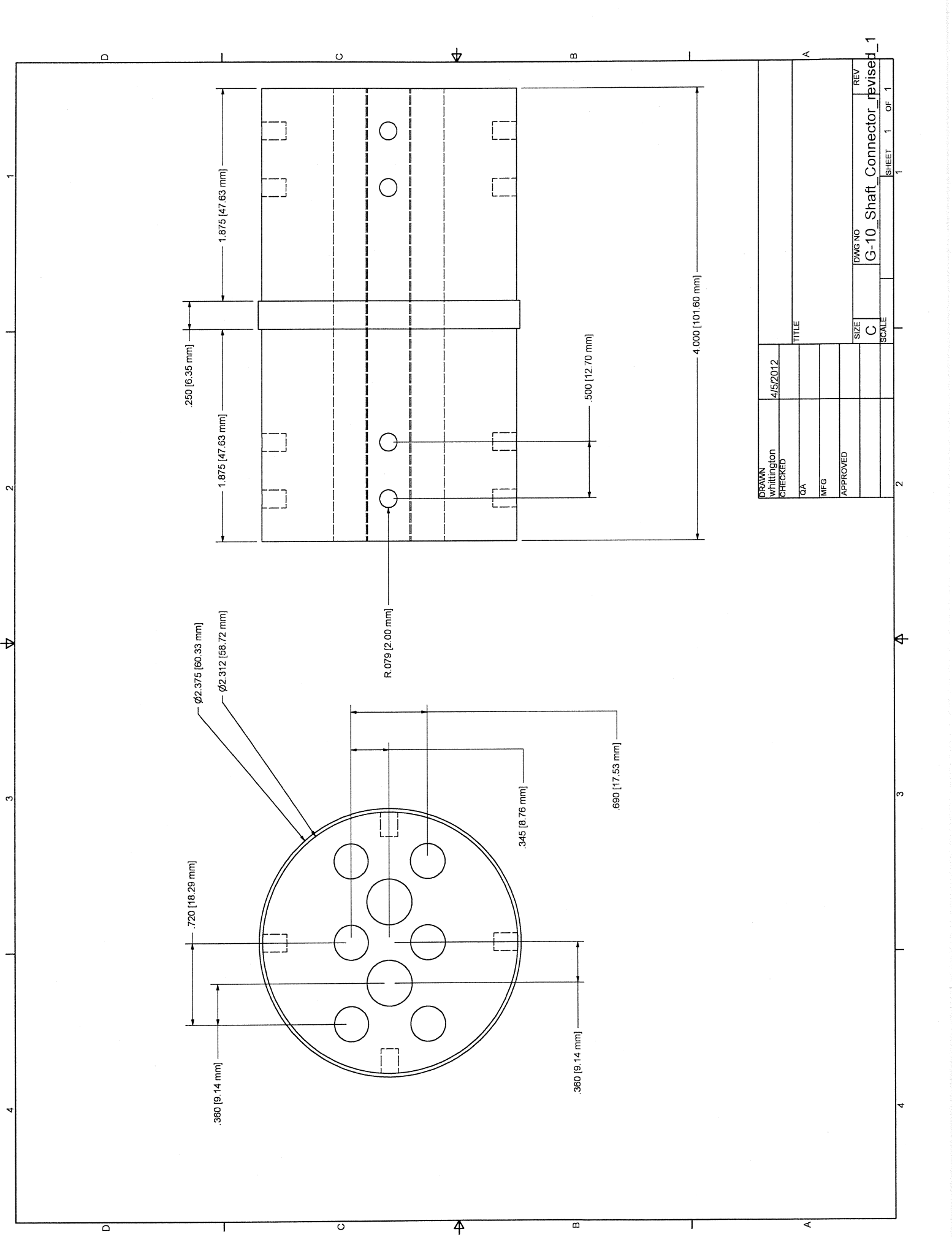
DRAWN Whittington	4/5/2012	TITLE	SCALE	DWG NO	REV
CHECKED				G10_plate_4_black_revised	
QA				SIZE	
MFG				C	
APPROVED				SCALE	
					SHEET 1 OF 1

1 2 3 4

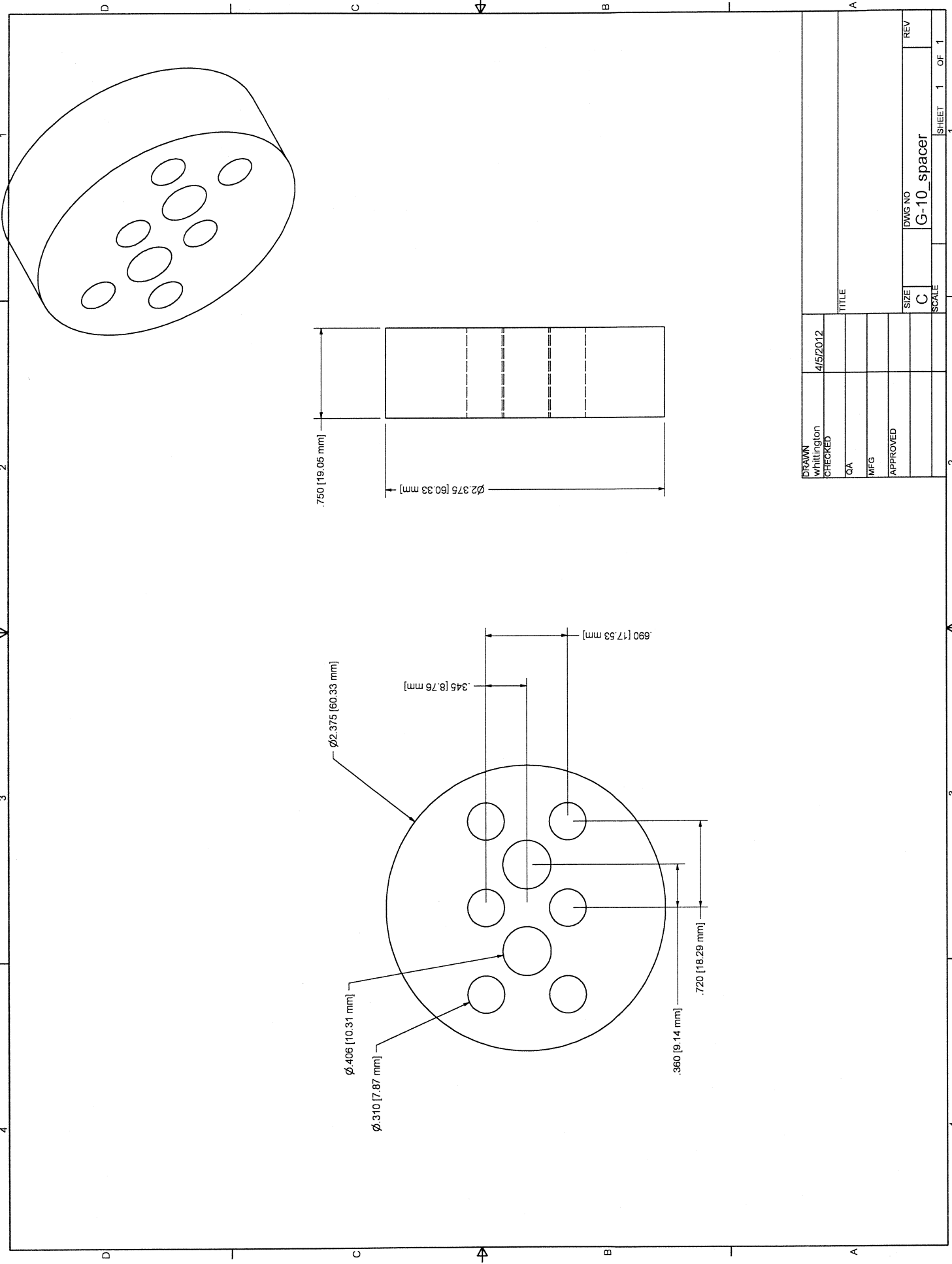
D C B A



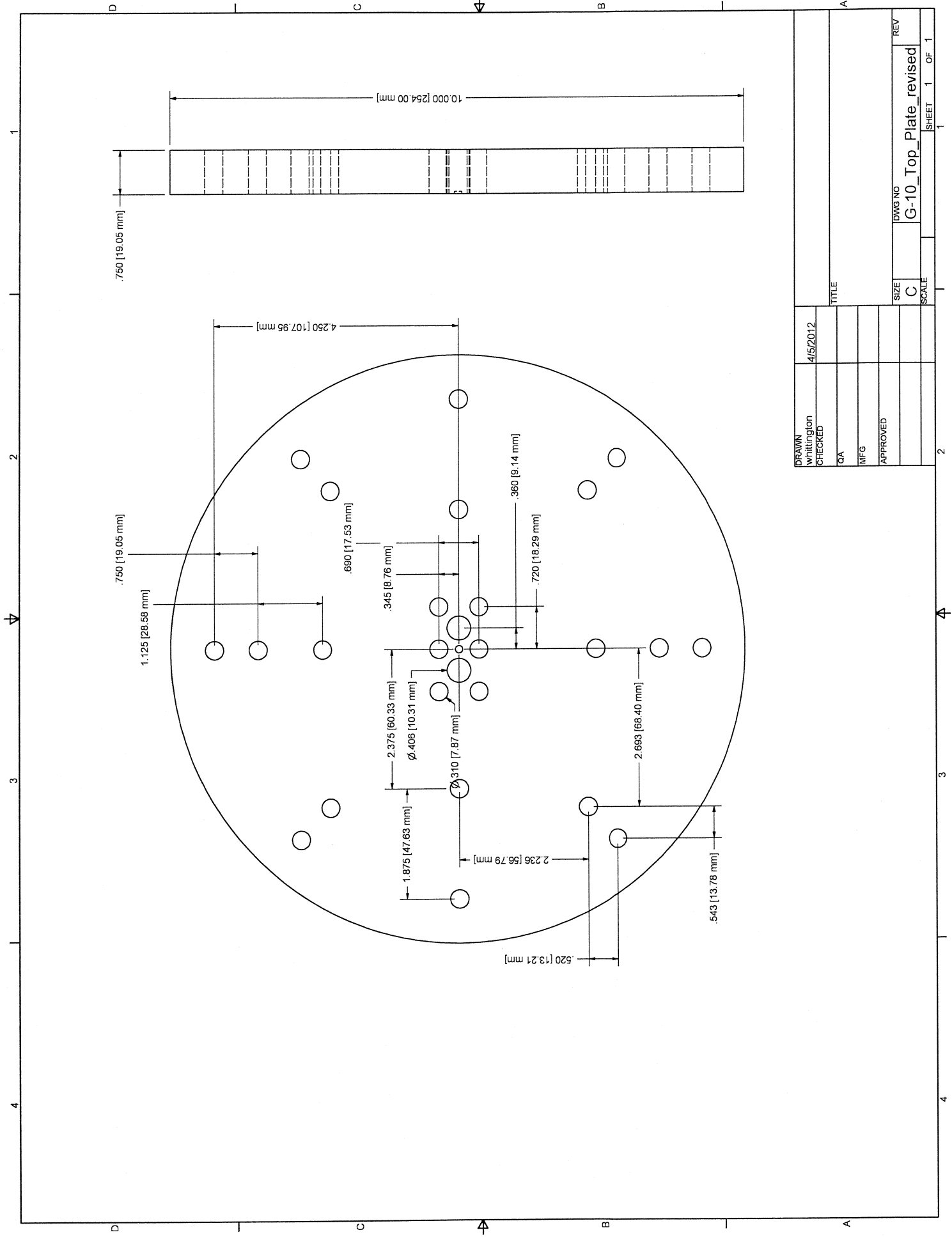
DRAWN Whittington	4/5/2012	TITLE	REV
CHECKED			
QA			
MFG			
APPROVED			
		SIZE	DWG NO
		C	G-10_Bottom_guidance_cap
		SCALE	REV
			1
			OF 1
			SHEET



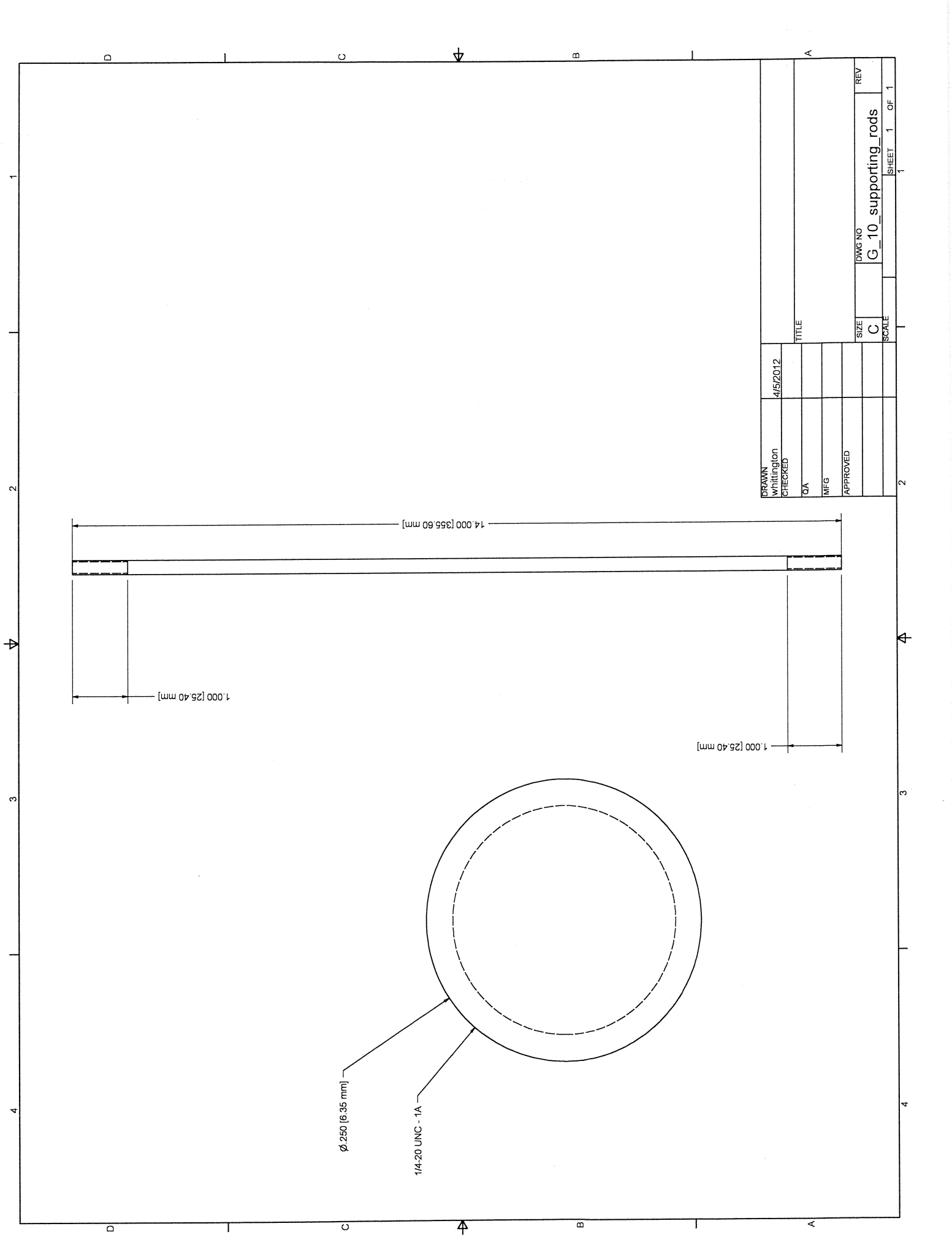
DRAWN	Whittington	4/5/2012	TITLE	
CHECKED				
QA				
MFG				
APPROVED				
SIZE	C	DWG NO	G-10_Shaft_Connector_revised_1	REV
SCALE				1 OF 1



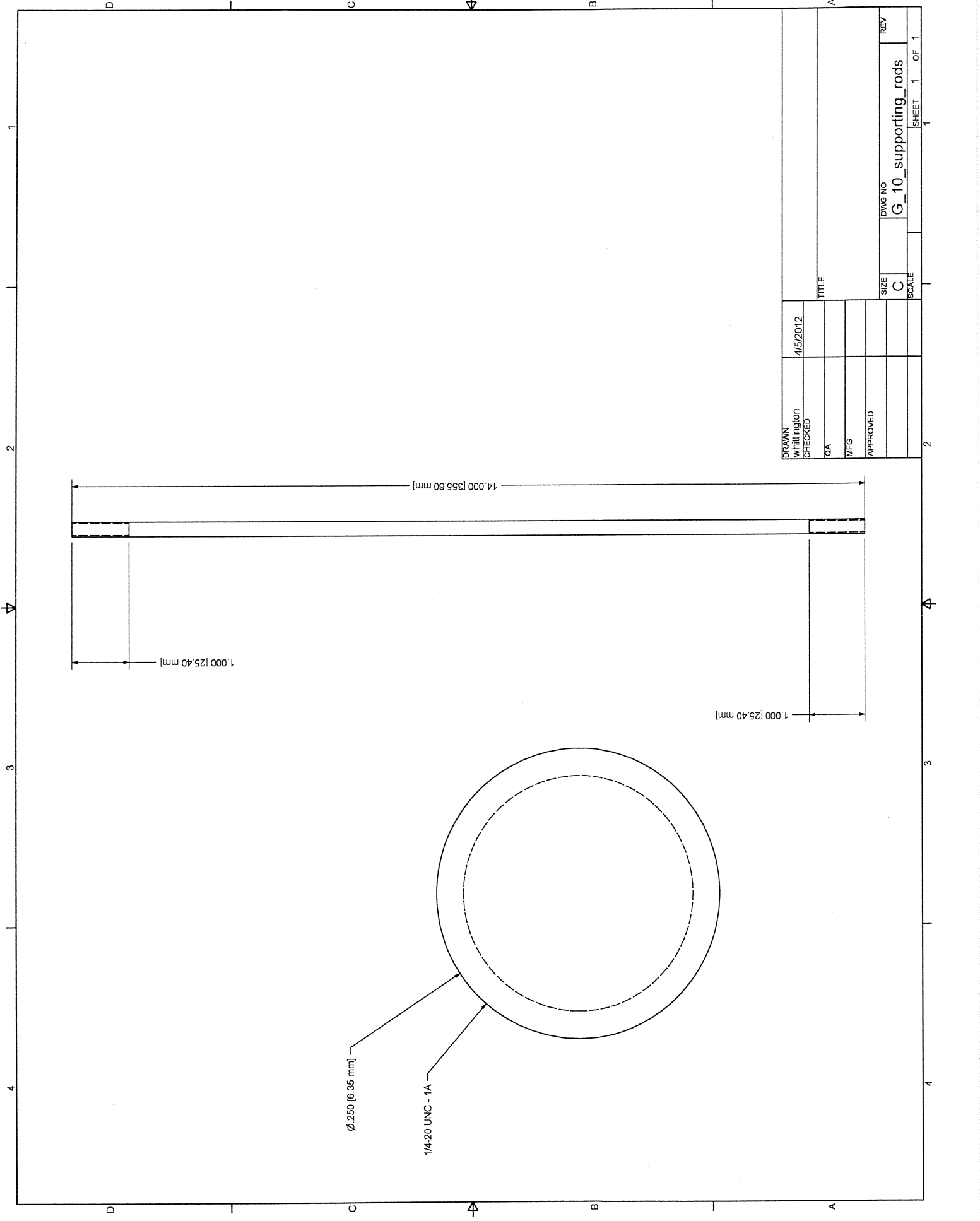
DRAWN Whittington	4/5/2012	TITLE	SCALE	SHEET 1	OF 1
CHECKED					
QA					
MFG					
APPROVED					
		SIZE	DWG NO		REV
		C	G-10_spacer		



DRAWN Whittington	4/5/2012	TITLE	SCALE	SIZE	DWG NO	REV
CHECKED				C	G-10_Top_Plate_revised	
QA						
MFG						
APPROVED						
			SCALE			
			SHEET	1	OF	1



DRAWN	Whittington	4/5/2012	TITLE	SIZE	DWS NO	REV
CHECKED				C	G_10_supporting_rod	
QA				SCALE		
MFG						
APPROVED						



$\phi 250$ [6.35 mm]

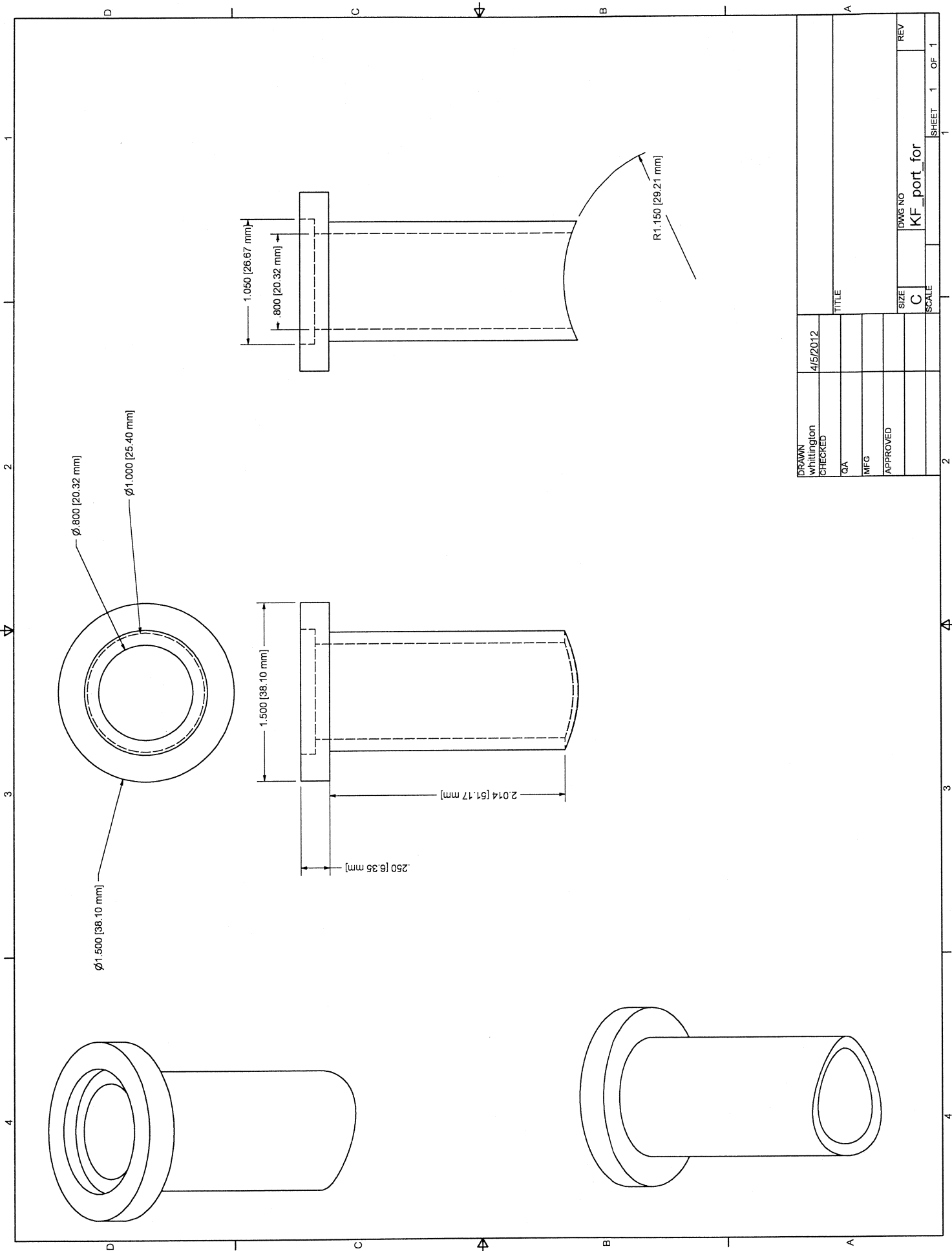
1/4-20 UNC - 1A

1,000 [25.40 mm]

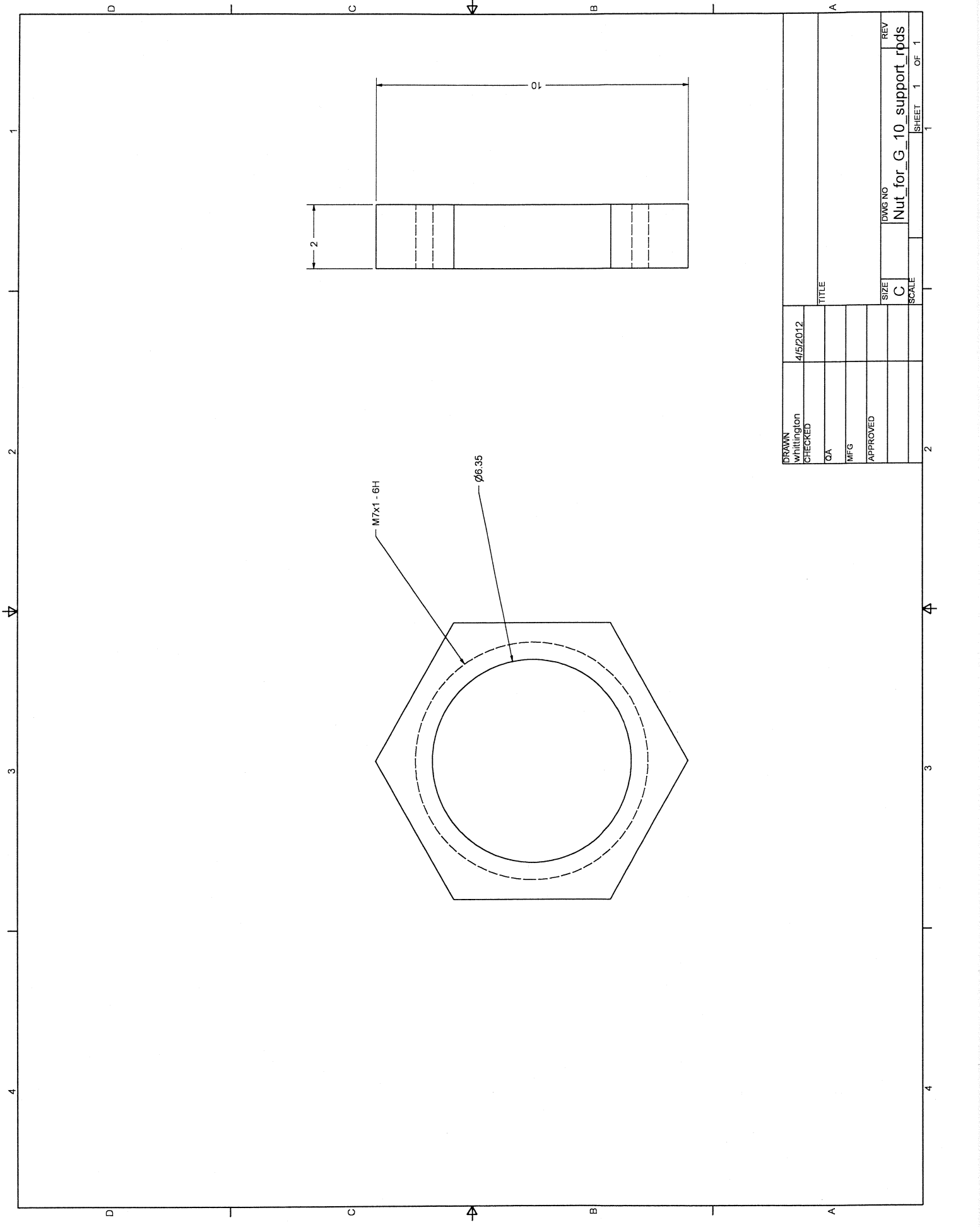
14,000 [355.60 mm]

1,000 [25.40 mm]

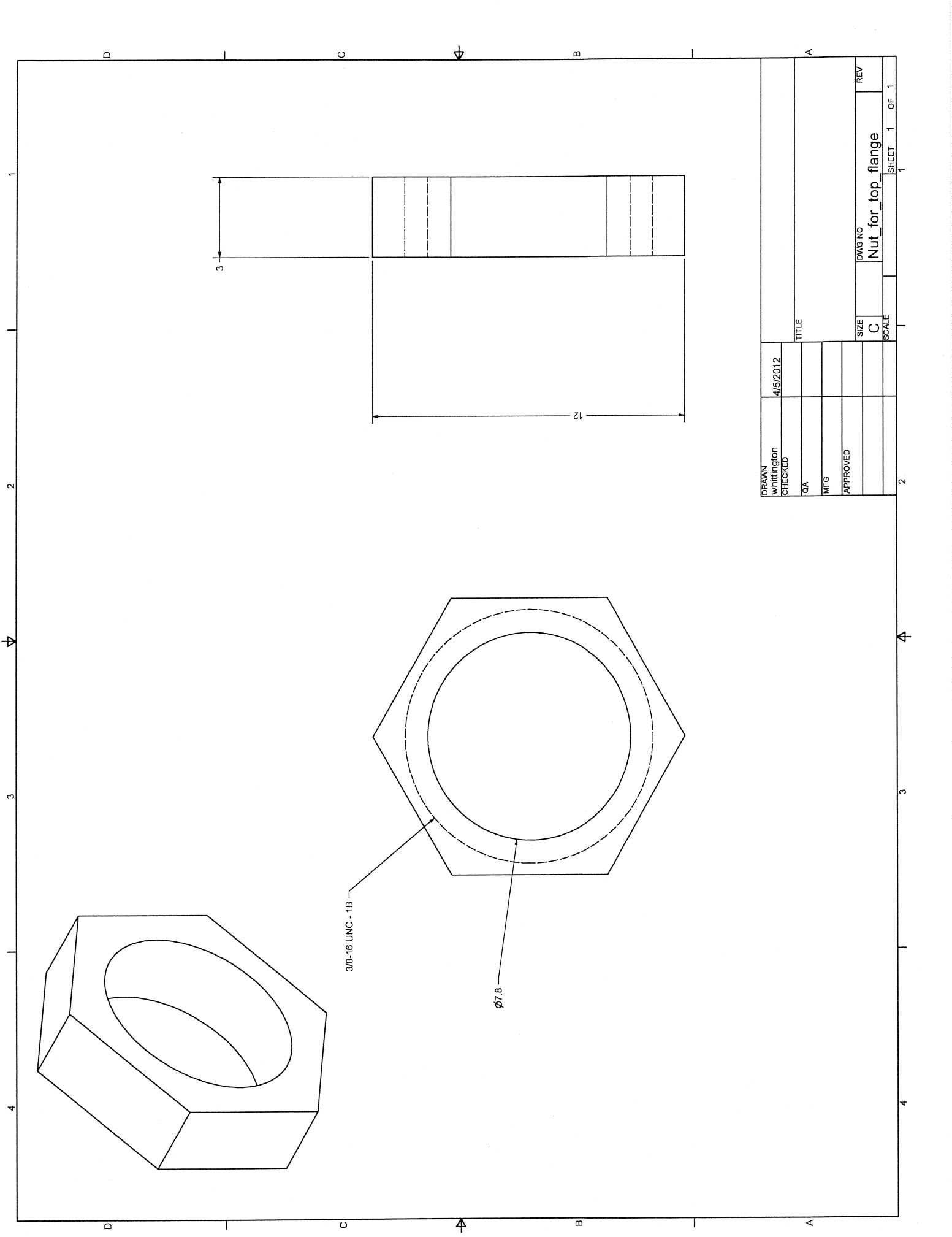
DRAWN	Whittington	4/5/2012	TITLE		SIZE	DWG NO	REV
CHECKED					C	G_10_supporting_rods	
QA							
MFG							
APPROVED							



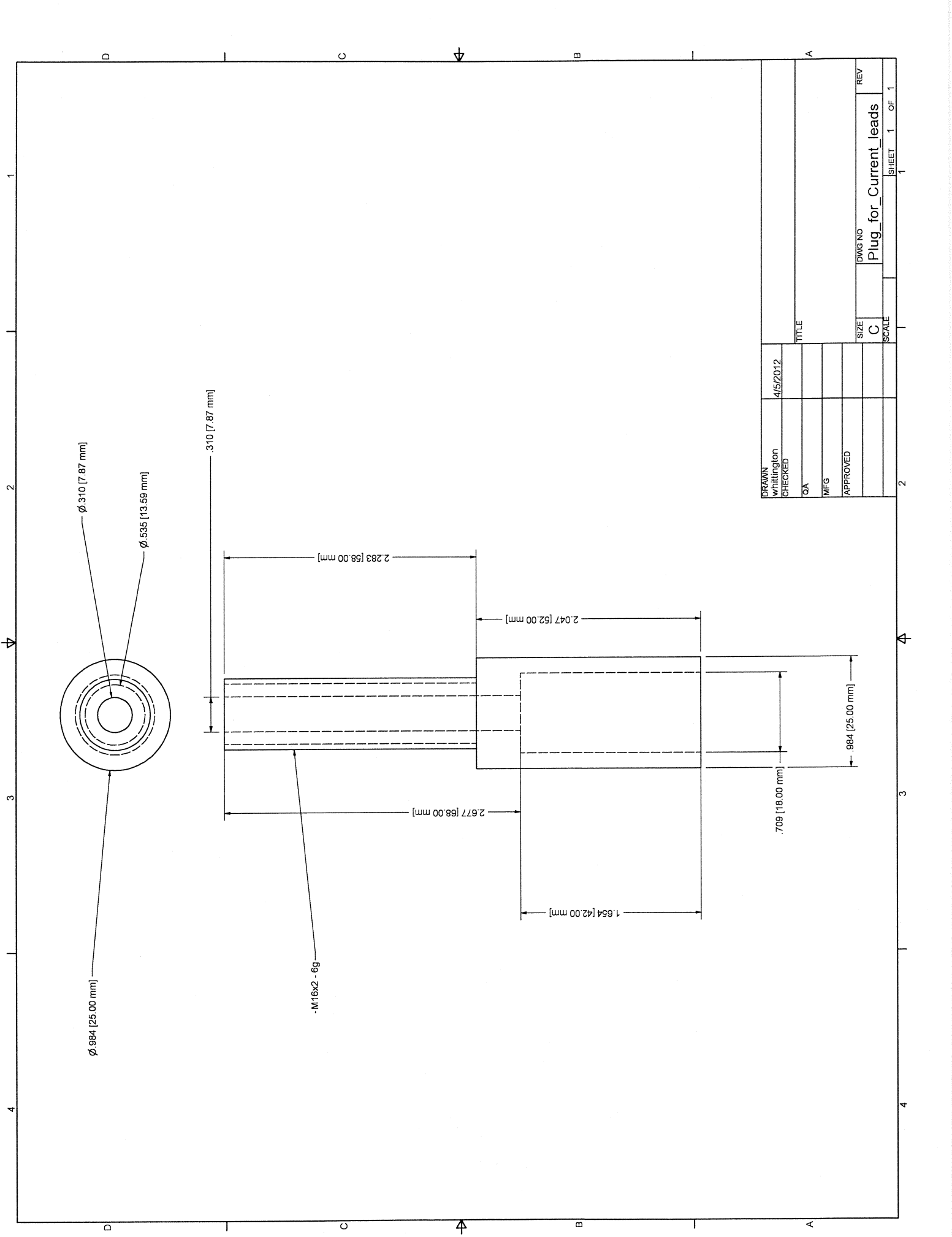
DRAWN	whittington	4/5/2012	TITLE	SCALE	SIZE	DWG NO	REV
CHECKED					C	KF_port_for	
QA							
MFG							
APPROVED							



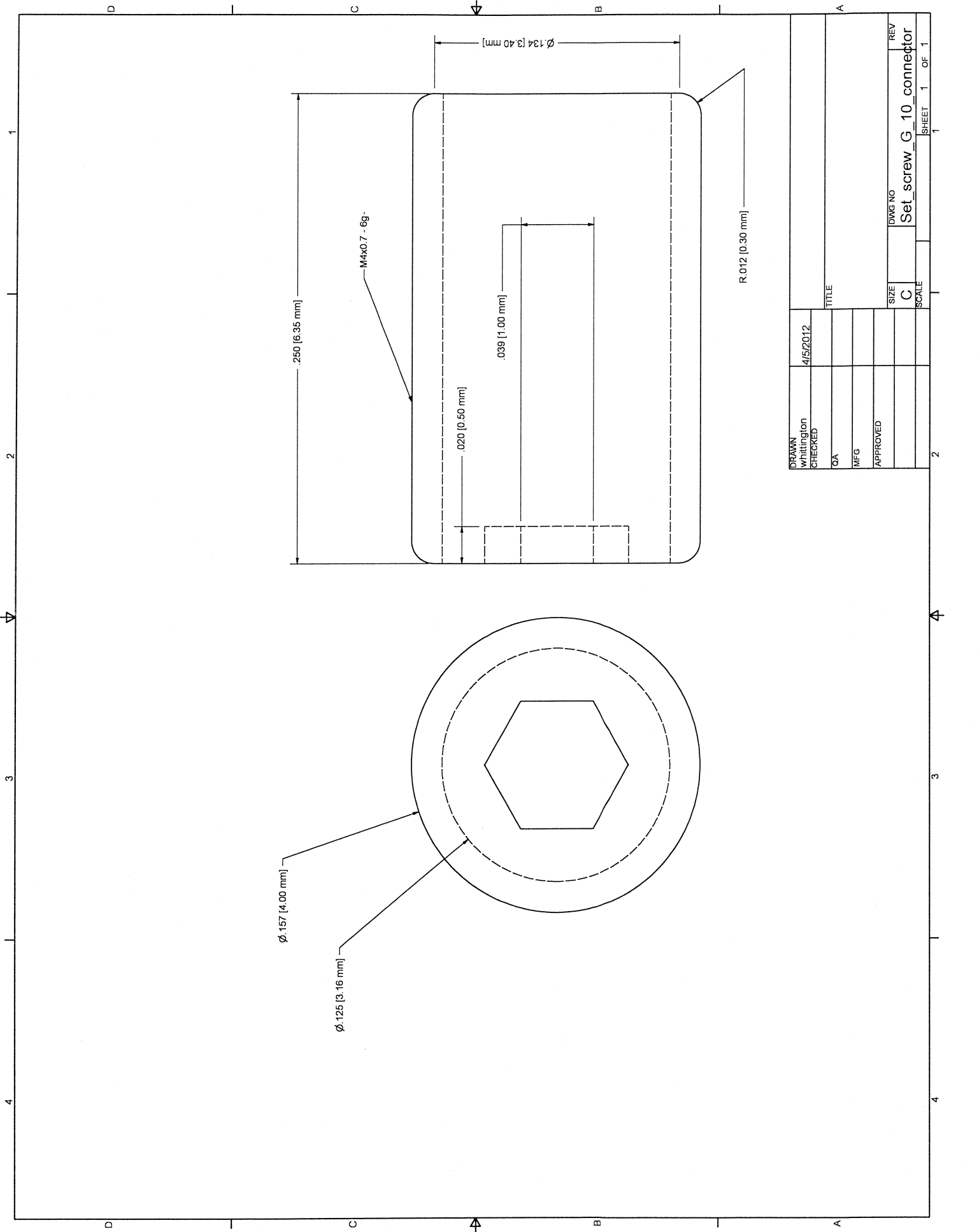
DRAWN	Whittington	4/5/2012	TITLE	
CHECKED				
QA				
MFG				
APPROVED				
			SIZE	REV
			C	Nut for G_10_support_rfds
			SCALE	DWG NO
				1
				SHEET 1 OF 1



DRAWN	whittington	4/5/2012	TITLE	
CHECKED				
QA				
MFG				
APPROVED				
			SIZE	DWG NO
			C	Nut_for_top_flange
			SCALE	REV
				1
				SHEET 1 OF 1



DRAWN	Whittington	4/5/2012	TITLE	SIZE	DATE NO	REV
CHECKED	CA			C	Plug_for_Current_leads	
QA						
MFG						
APPROVED						
			SCALE	SHEET 1 OF 1		



Ø 157 [4.00 mm]

Ø 125 [3.16 mm]

.250 [6.35 mm]

.020 [0.50 mm]

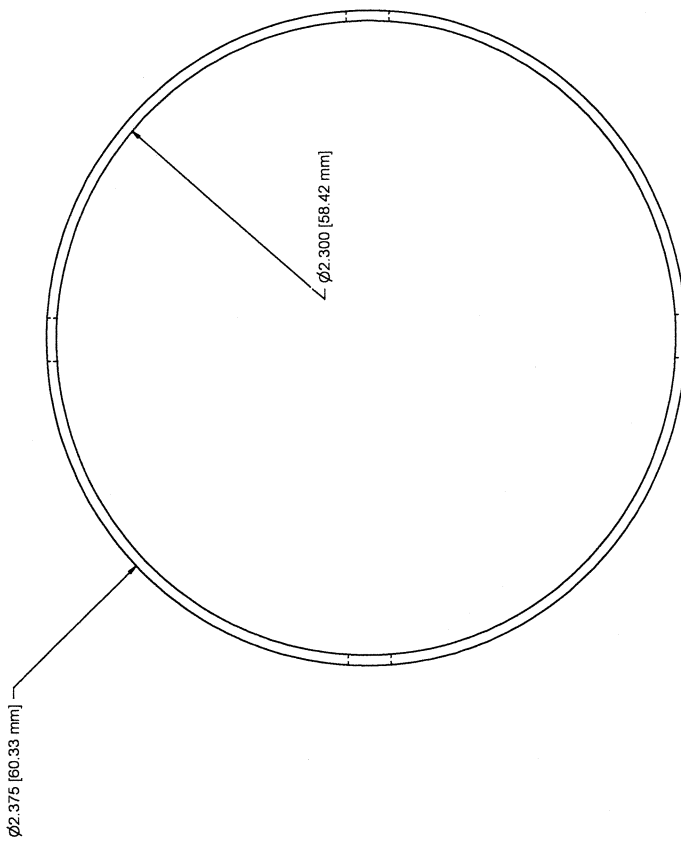
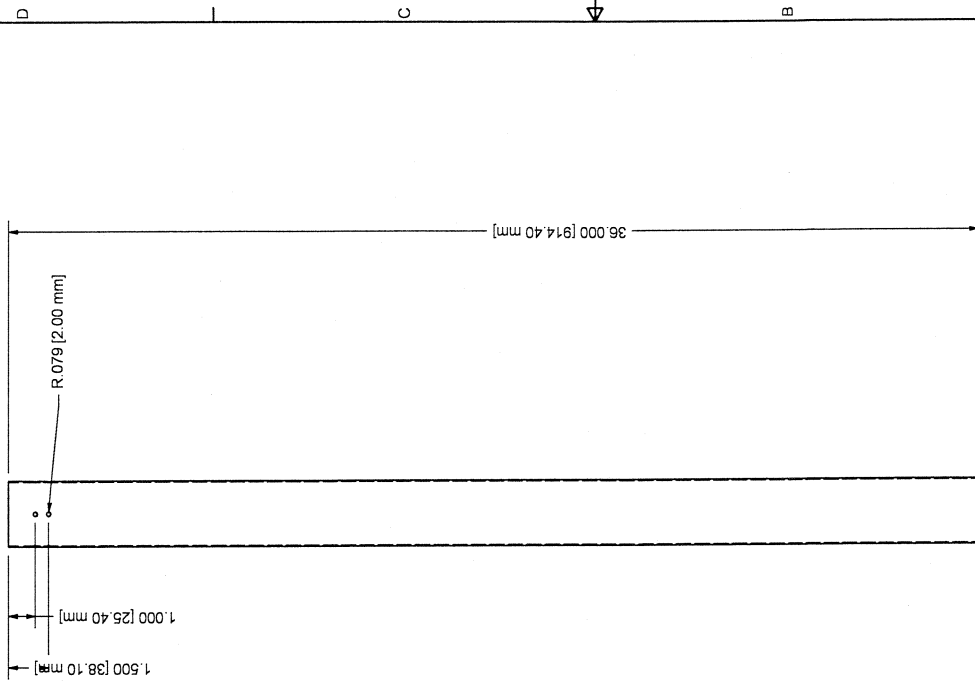
.039 [1.00 mm]

Ø 134 [3.40 mm]

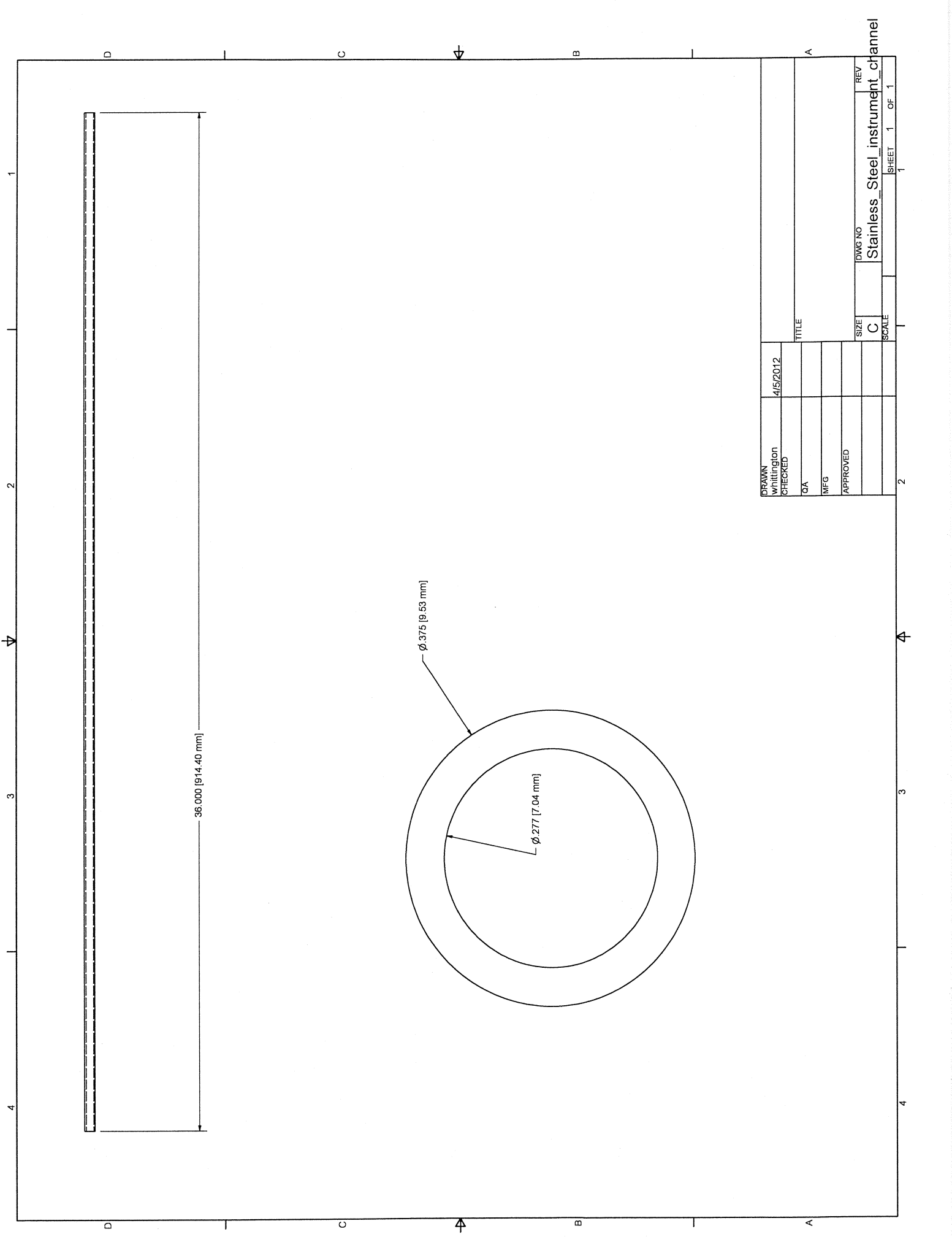
R.012 [0.30 mm]

M4x0.7 - 6g

DRAWN	Whittington	DATE	4/5/2012	TITLE	
CHECKED					
QA					
MFG					
APPROVED					
		SIZE	C	DWG NO	REV
		SCALE		Set_screw_G_10_connector	
					SHEET 1 OF 1



DRAWN	Whittington	4/5/2012	TITLE	REV
CHECKED				Stainless_Steel_Half_Casing
QA			SIZE	
MFG			C	
APPROVED			SCALE	
				SHEET 1 OF 1



DRAWN
Whittington

4/5/2012

CHECKED

TITLE

QA

MFG

APPROVED

SIZE

C

SCALE

DWG NO

Stainless_Steel_instrument_channel

REV

1

OF

1

2

3

4

1

1

