

68K Turbine Blade Handling Final Spring Midterm Design

Team 14

Patrick Filan
Clint Kainec
John Kemp

Sponsor

TECT Power – Ashok Patel

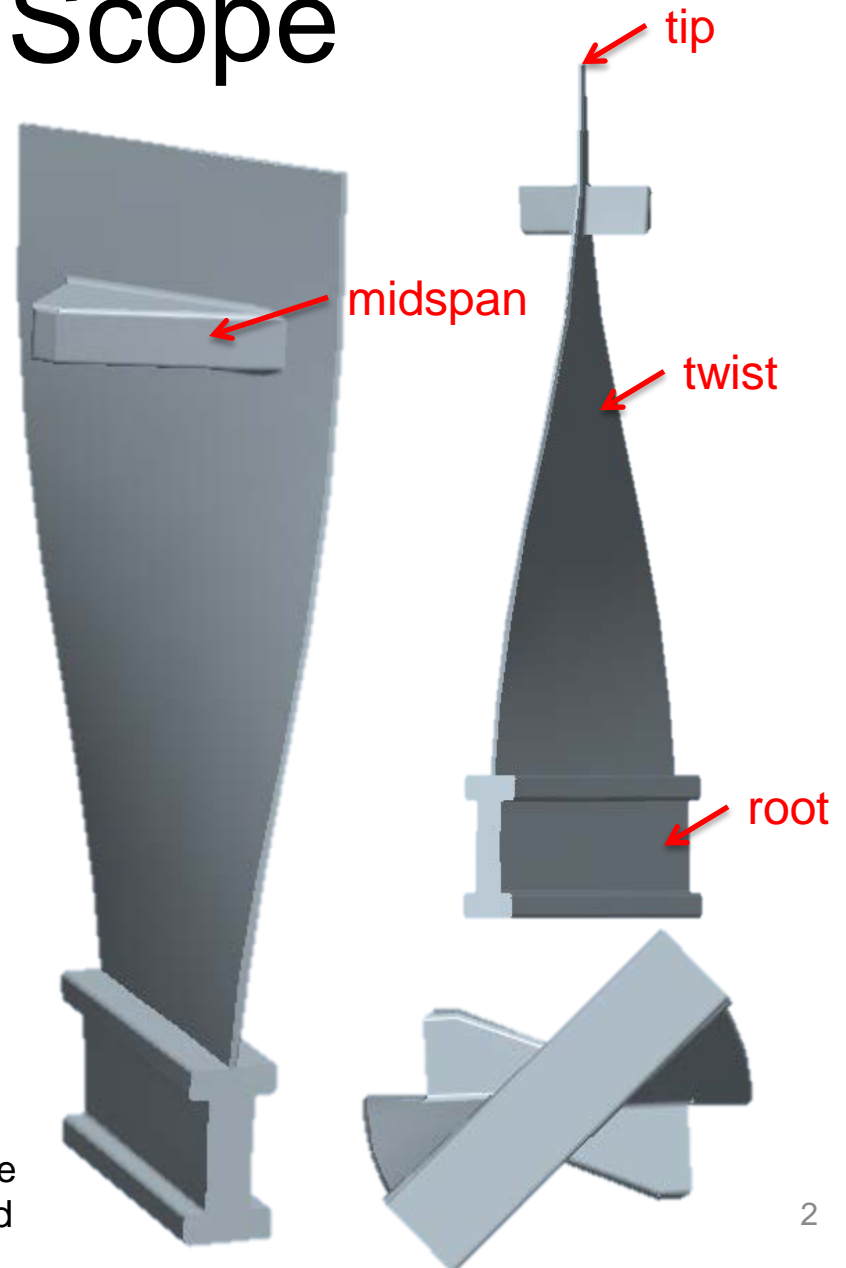
Advisors

Dr. Patrick Hollis
Dr. Kamal Amin



Project Scope

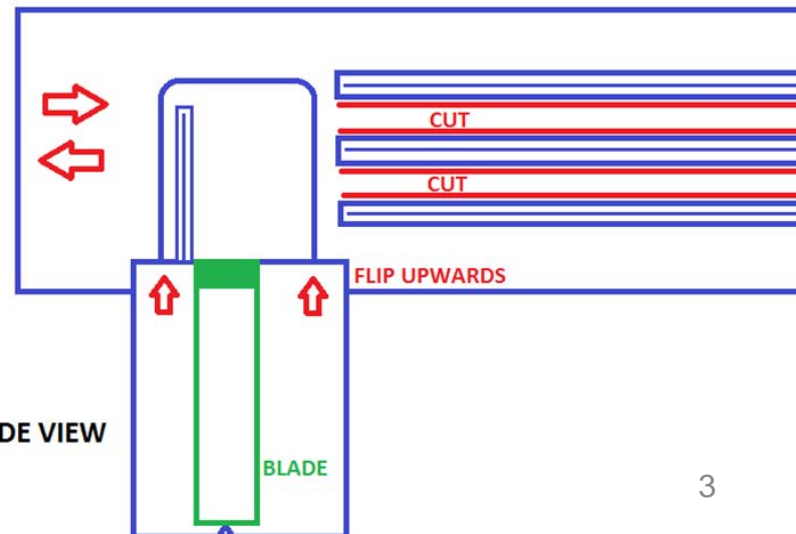
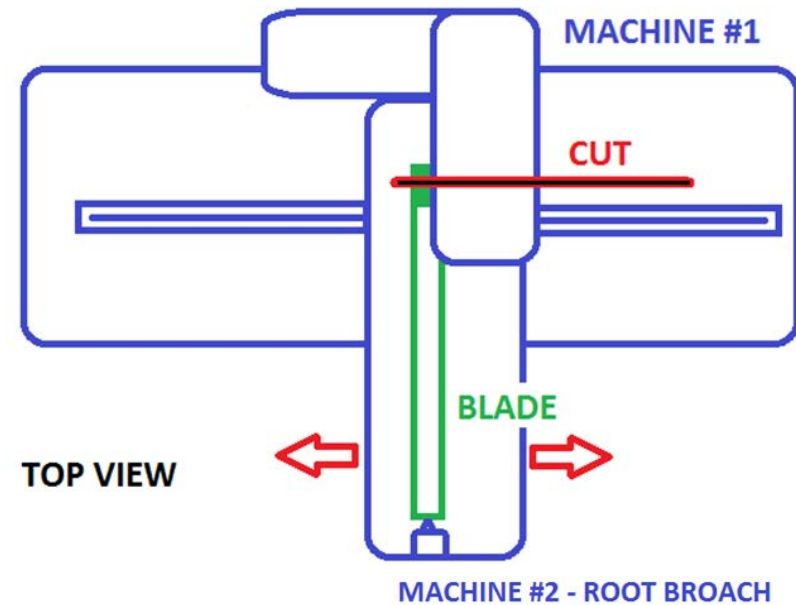
- The Blade
 - 45lb Titanium-aluminide
 - 3ft x 1ft x 0.125in
 - Received as a raw forging
 - Only basic geometry
- Goal
 - Must transport and orient for placement in machines
 - Multiple mills are in the root machining area
 - Differing angles and placement in machines



Figures – a representative model of the 68K blade with geometry labeled in red

Problem

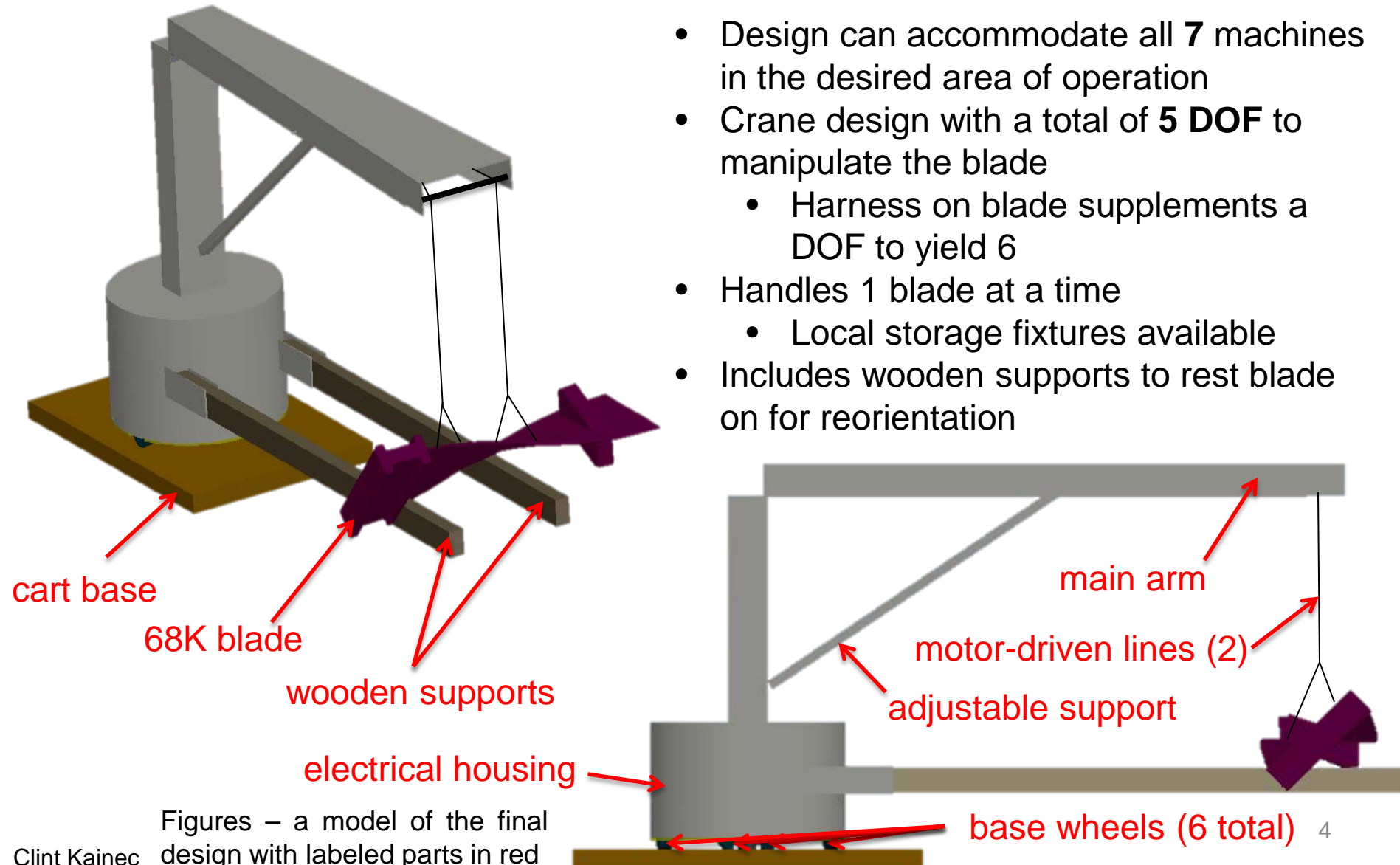
- Manual lifting of the 68K turbine blade
 - Risk of injury
 - Straining workers
 - Difficult for new workers
 - Needs to be **eliminated**
- The blade moves through several machines
 - Each machine unique
 - Obstructions
 - Placement
 - Orientation



Figures – diagrams of two machines in the machining area (end-mill and broach wall)

Design Solution

- Design can accommodate all **7** machines in the desired area of operation
- Crane design with a total of **5 DOF** to manipulate the blade
 - Harness on blade supplements a DOF to yield 6
- Handles 1 blade at a time
 - Local storage fixtures available
- Includes wooden supports to rest blade on for reorientation



Figures – a model of the final design with labeled parts in red

How it Works

- **Mounted on hydraulic lift cart**
 - Can rotate about top
- **Two motor-driven lines**
 - Run down arm
 - Angle is *variable*
 - *Independently* driven
 - Wired controllers
 - Two connections on each
 - Attach to harness
- Blade can be held:
 - Horizontally
 - Vertically
 - At various angles

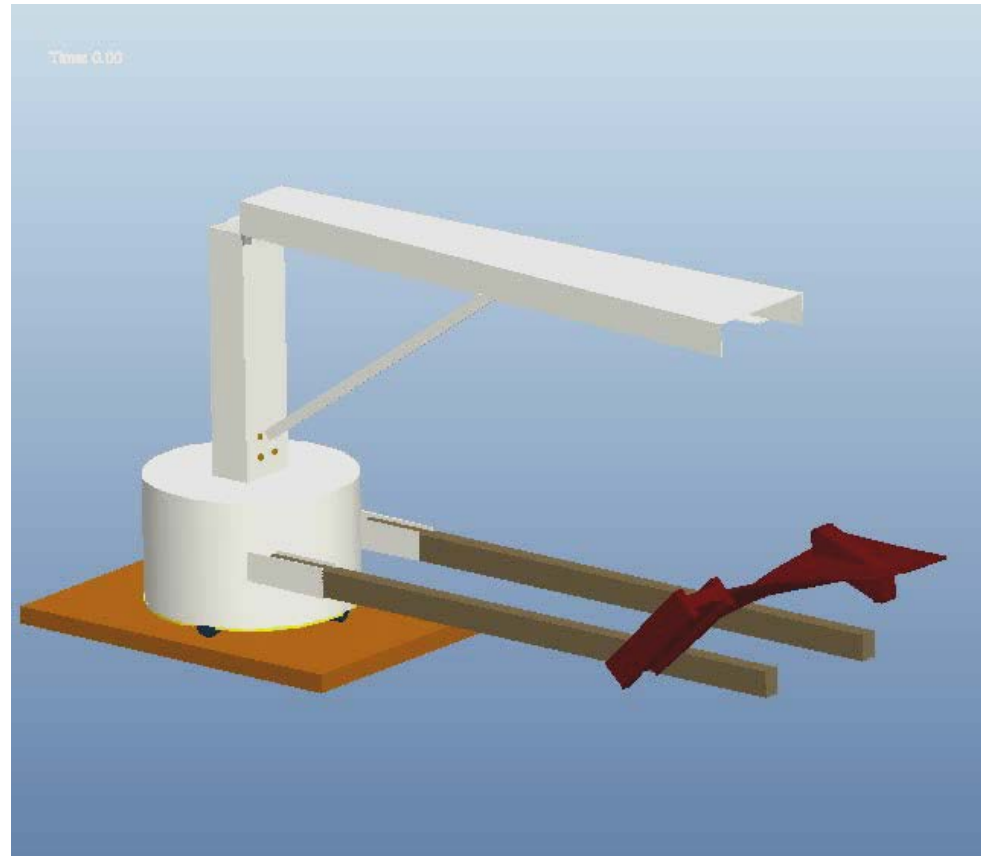


Figure – simulation video of the vertical lifting of the blade by the crane mechanism. (note: the motor-driven lines are nonexistent in the video)
The finished prototype will operate similarly.

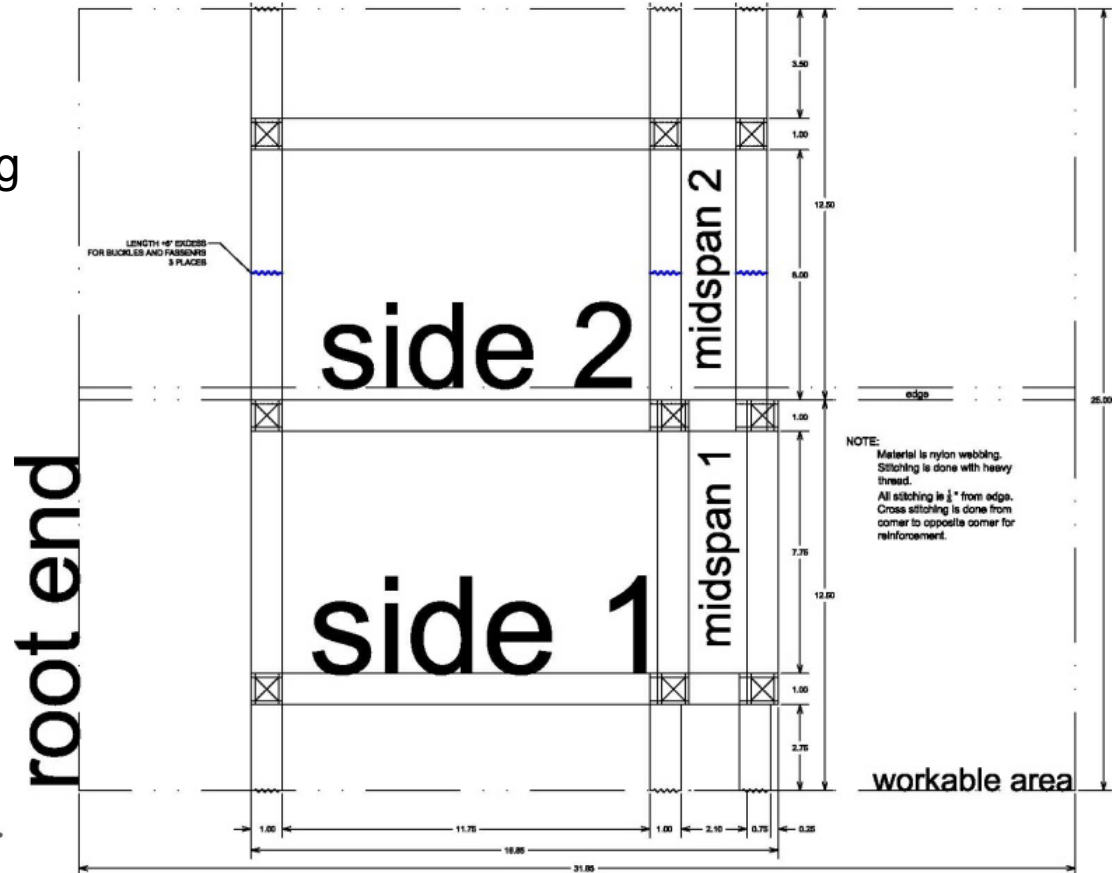
Harness Design

Purpose:

- Fits on the blade
 - Does not need to be removed during machining
- Adjust blade angle and orientation
 - Attaches around midspan and towards the root

Design:

- Nylon and leather
- Sewn with heavy thread
- Uses plastic buckles and fasteners



Figures – The sewing design of the harness (above) and a representative scale model of the harness with buckles (left).

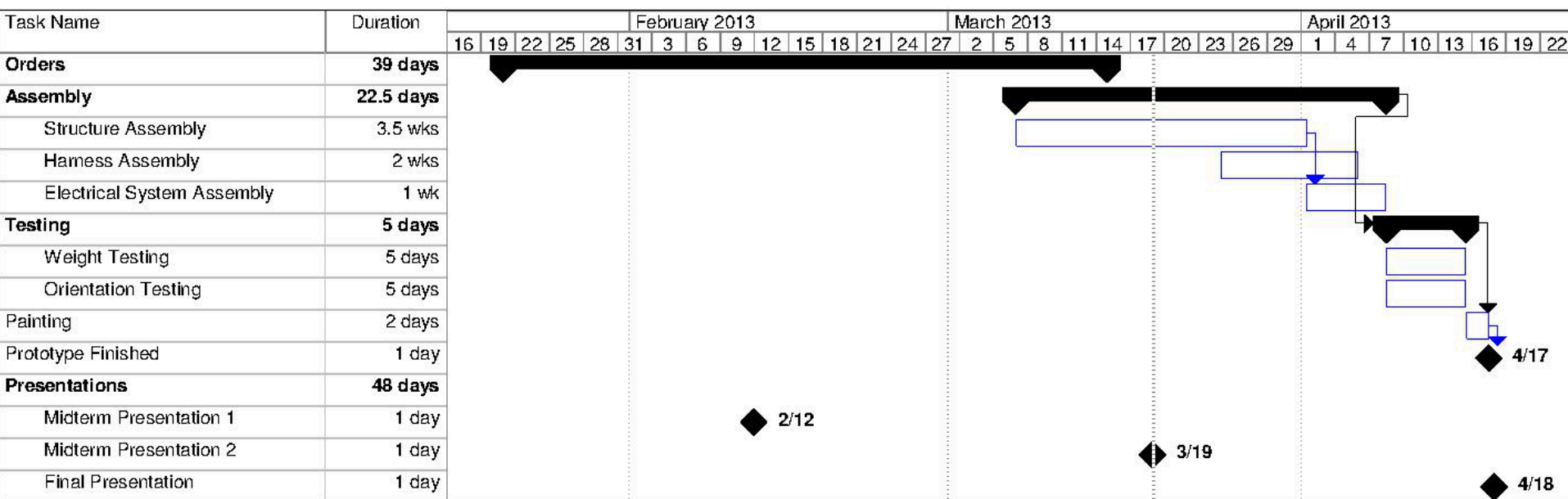
Current Project Status

- All parts received
 - Major structures
 - Small parts
 - Hardware
- To do:
 - Drill mounting holes
 - Fix parts together
 - Aesthetic adjustments
 - Sanding welds
 - Painting
 - Sewing harness



Figure – The cart at its fully-lowered (left) and fully-raised (right) positions with the main canister housing set on top.

Current Schedule



- Final adjustments and assembly underway
 - Assembly expected to be completed early April
- Testing will commence after assembly
- Painting and finishing will start after testing
- Finished prototype will be presented at the final poster session and presentation

Current Expenses

- **Foreseeable spending complete for required parts**
 - Under budget
 - Improvements and adjustments can be made after prototype completion
- Money saved by:
 - Using a friendly machine shop for the main structure
 - Using a friendly seamstress for the harness
 - Picking-up large parts instead of shipping

Alloted Budget	\$2,000.00
Machined Structure	\$675.00
Hardware	\$90.00
Harness	\$120.00
Winches	\$240.00
Batteries	\$110.00
Chargers	\$60.00
Pulleys	\$90.00
Wheels	\$60.00
Travel expenses	\$100.00
Remaining	\$455.00

Project Summary

- The project is on-budget and on-time
 - Expected to finish below the allotted budget
 - Remaining assembly will complete in early April
 - Prototype will be completed before final presentation and poster session (April 18th)
 - This functional prototype should be ready for use at TECT Power's Thomasville facility after presentation of it to MEAC for its intended purpose.

Questions, Comments?



References

- Newton, Jason, et al. "TECT." n.d. *Team 9*. October 2012. <http://eng.fsu.edu/me/senior_design/2012/team9/>.

Special Thanks

- **Jason Newton**, Alumnus & Graduate Student at FSU
- **Ashok Patel**, Environmental Health & Safety Manager at TECT Power
- **Dr. Patrick Hollis**, Associate Professor at FSU
- **Dr. Kamal Amin**, Adjunct Professor at FSU
- **Dave Morgan**, Lead Foreman at Westgate Sheet Metal