

REEF Subsonic Wind Tunnel Articulating Robotic Arm

SPONSORS

MICHAEL SYTSMA

KEN BLACKBURN

ADVISOR

DR. RAJAN KUMAR

INSTRUCTORS

DR. NIKHIL GUPTA

DR. CHIANG SHIH

TEAM 12

ANDREW BALDWIN

JUSTIN BROOMALL

CAITLAN SCHEANWALD

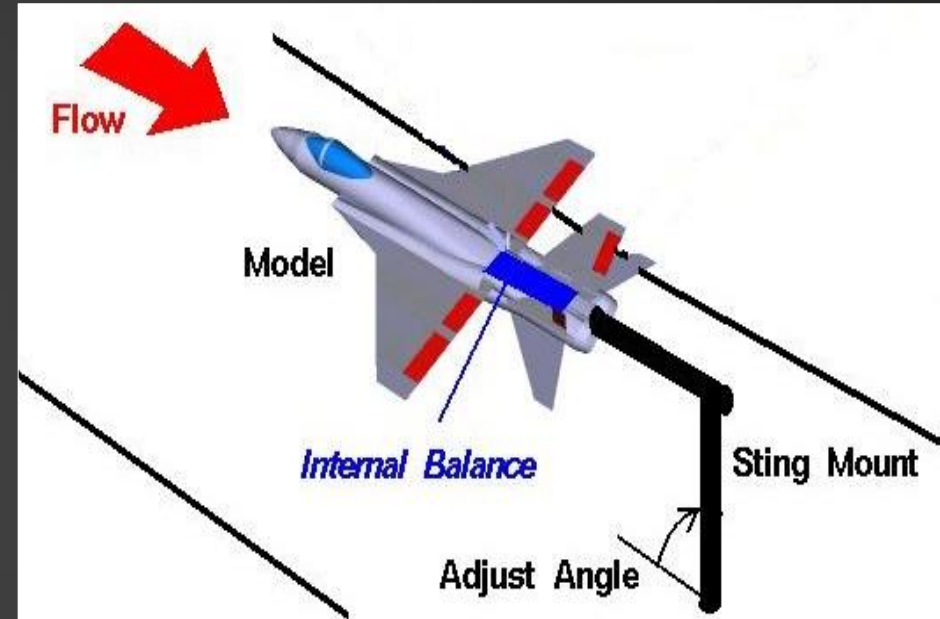
JACOB KRAFT

Problem Statement

- The design and production of a cost effective mechanism that would hold and adjust the orientation of a specimen being tested in a subsonic wind tunnel
- The current arm and mount are being removed, therefore a new system is needed in order for testing to continue
 - Quotes from companies that will design/build systems exceed \$100,000
 - Working budget of \$2,000

Wind Tunnels

- Research tool to recreate flight conditions
- Cost effective, controlled environment
- Models scalable through the use of dimensionless properties

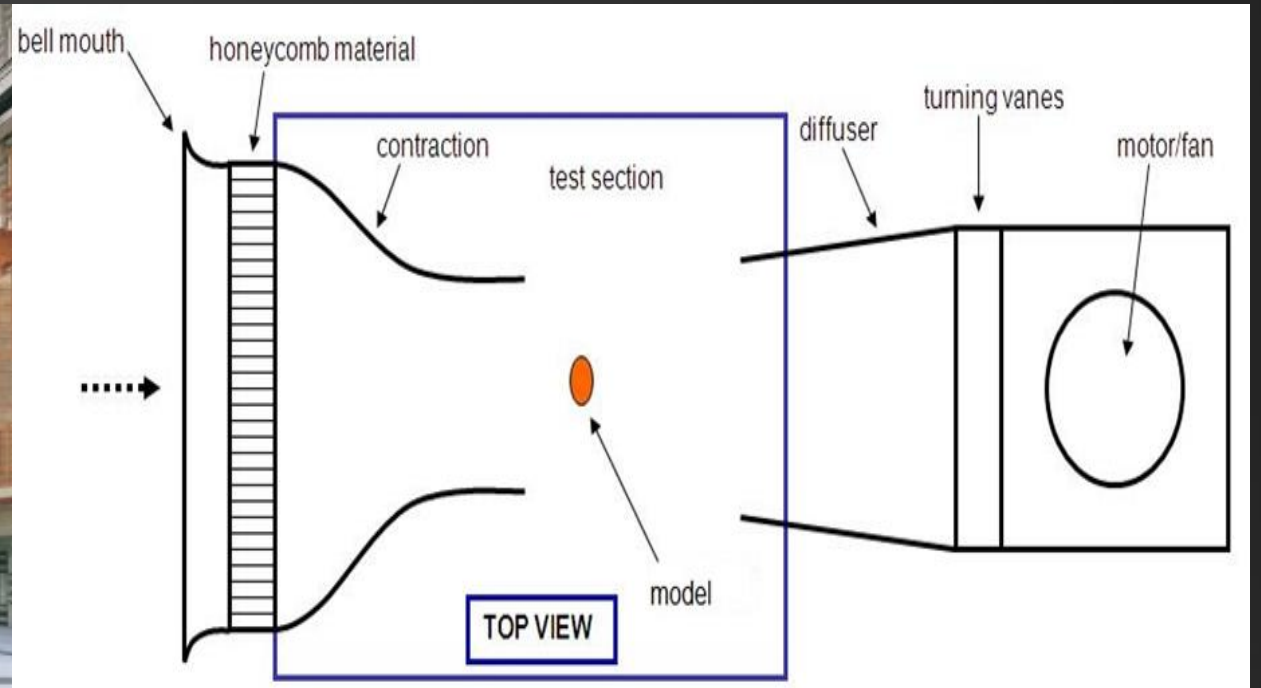


Sting Mount in Wind Tunnel

The Test Section



Open Test Section



Overhead View of REEF Center
Wind Tunnel

Project Objective

- **Arm able to withstand maximum force generated by wind tunnel**
 - **Maximum Velocity: 22 m/s**
- **Center of mass of specimen must not change during manipulation**
- **Adjustable pitch range: -5° to $+20^{\circ}$**
- **Adjustable yaw range: $\pm 10^{\circ}$**
- **Model must not move when in set position**
- **User interface to control motion of arc**

Design Constraints

- User interface using LabVIEW
- Motion Controller language and specifications
- 0.25° orientation accuracy
- Maximum deflection of 0.25 in.
- Factor of safety of 5
- \$2,000 budget

Review

- **Procurement**
 - All ordered parts received
 - Remaining purchase orders in progress
- **Design**
 - Sting Mount
 - Turntable Plate
- **Machining**
 - Drawings sent to machine shop
- **Hardware Constraints**
- **Programming**
 - Hardware and Software Communication



Updates

- Design of turntable plate
- Machining
 - Completed except turntable plate
- Procurement
 - Mechanical parts completed
 - Electrical components in progress
- System assembly in progress

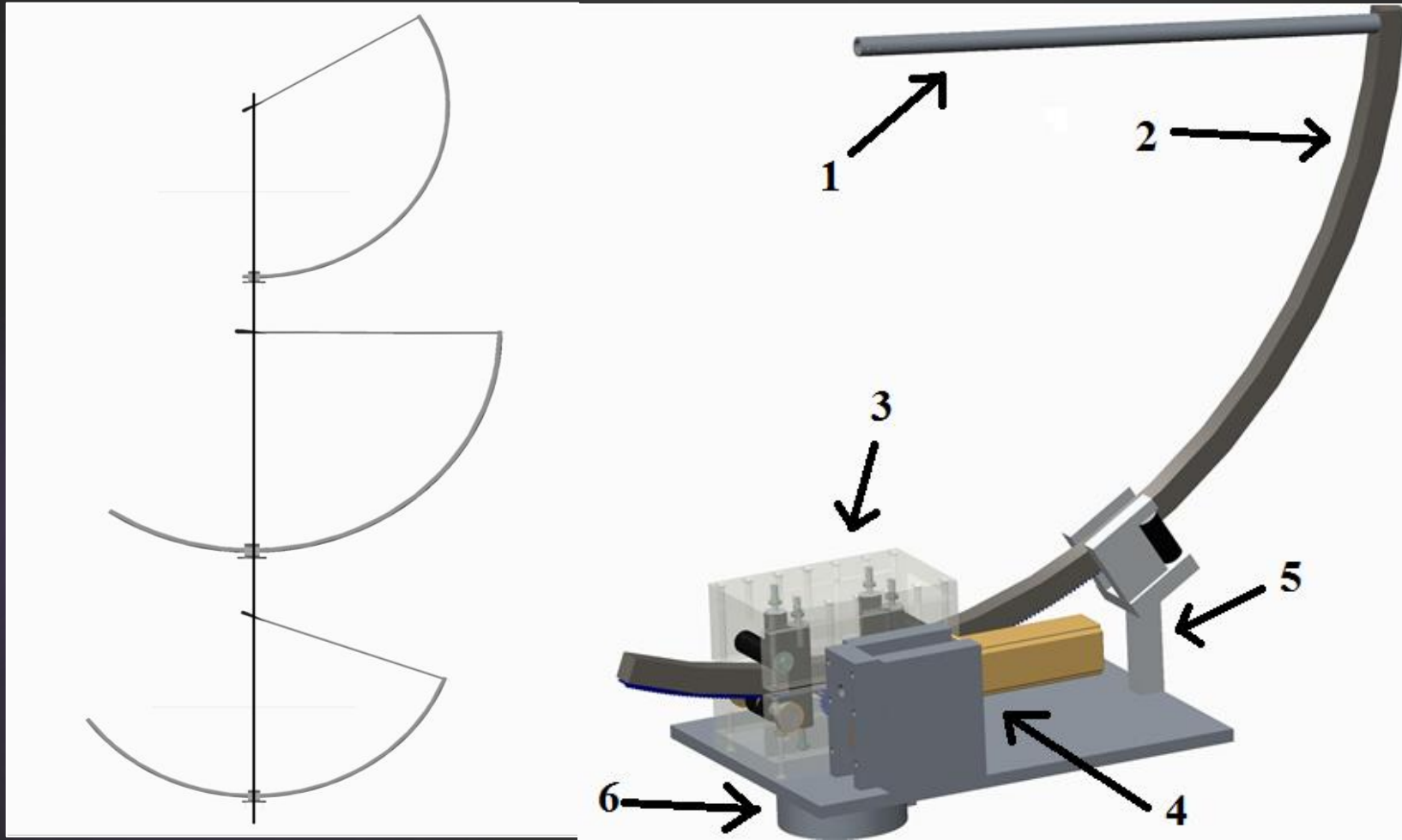


Updates Continued

- Programming
 - LabVIEW and Galil communication achieved
 - Conditional coding in progress
- Constraints
 - Hardware received (glue, bolts, rollers, bearings, etc.)



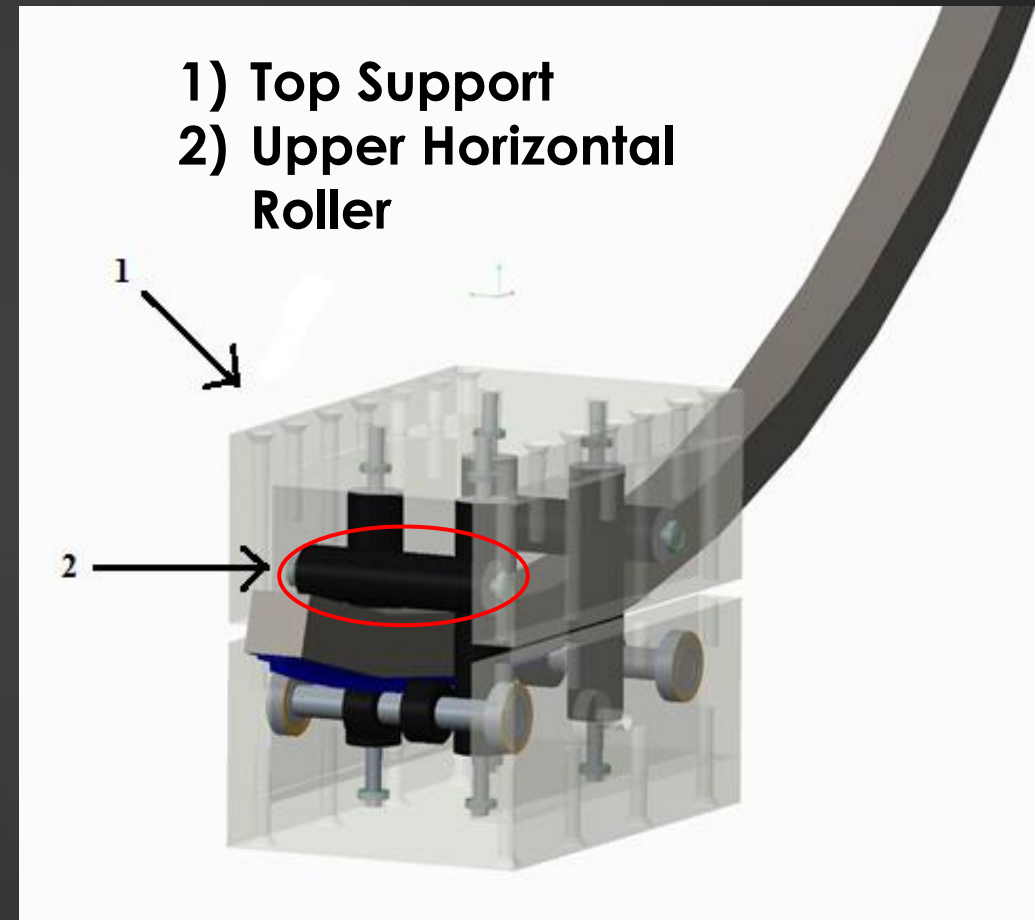
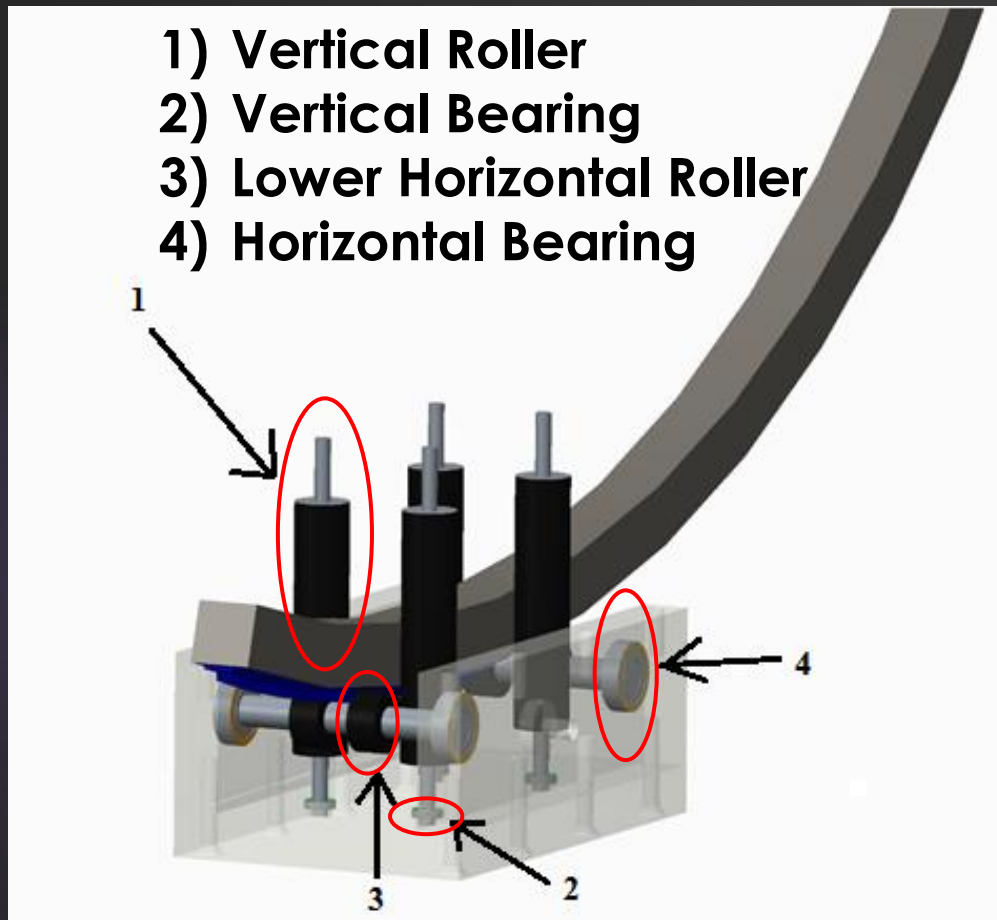
Design Concept



Legend

- 1) Sting Mount
- 2) Arc
- 3) Mounting System
- 4) Drive Train
- 5) Follower
- 6) Turntable

Mounting System - Assembly



Mounting System - Construction

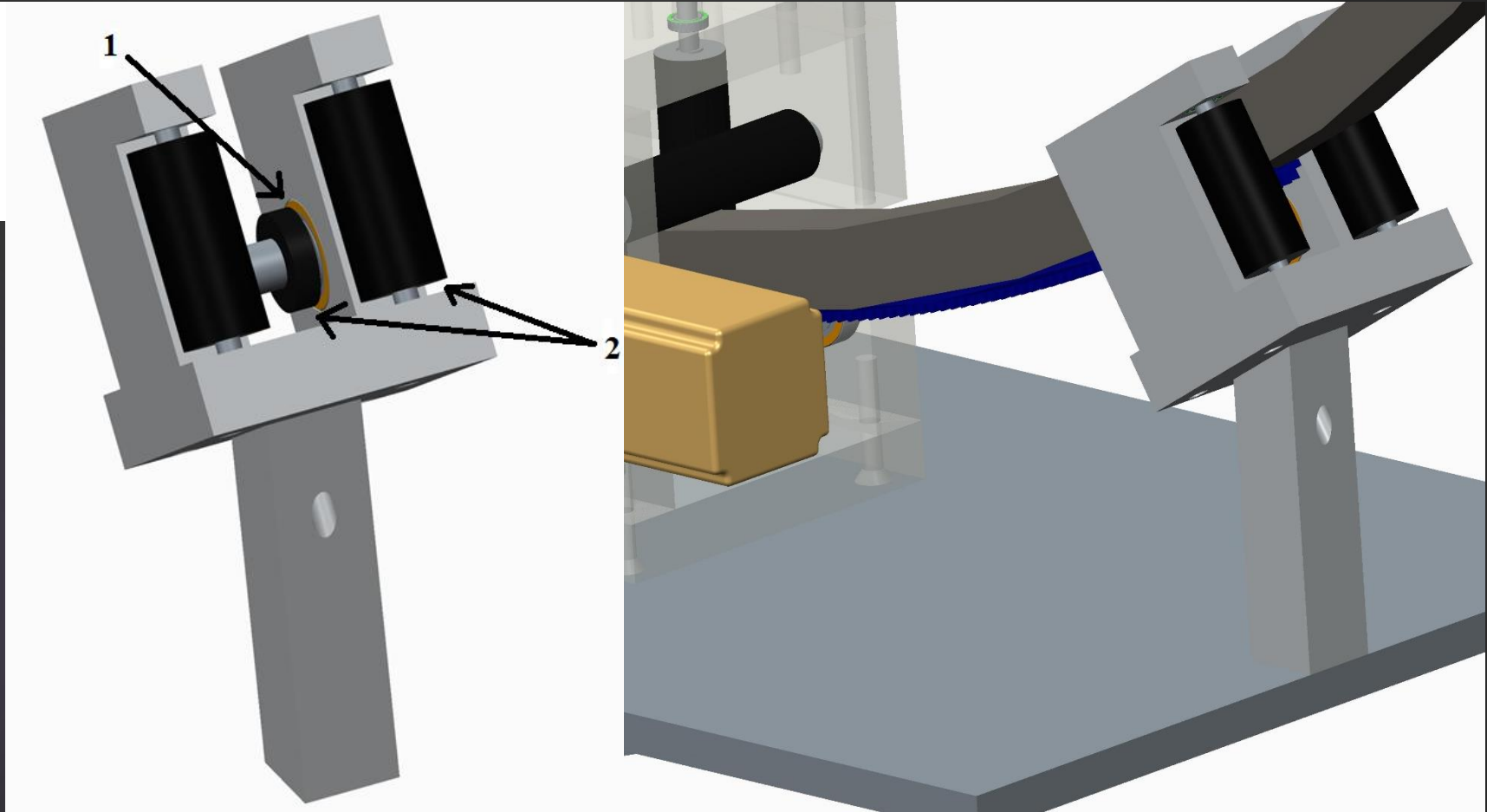
- **Vertical Constraints**
 - Top and bottom housing
 - Bearings
 - Shafts with rollers (arc support)
- **Horizontal Constraints**
 - Rollers, C-clips, bearings
 - Left and right housing
- **Construction**
 - $\frac{1}{4}$ -20 bolts housing together



Followers - Assembly

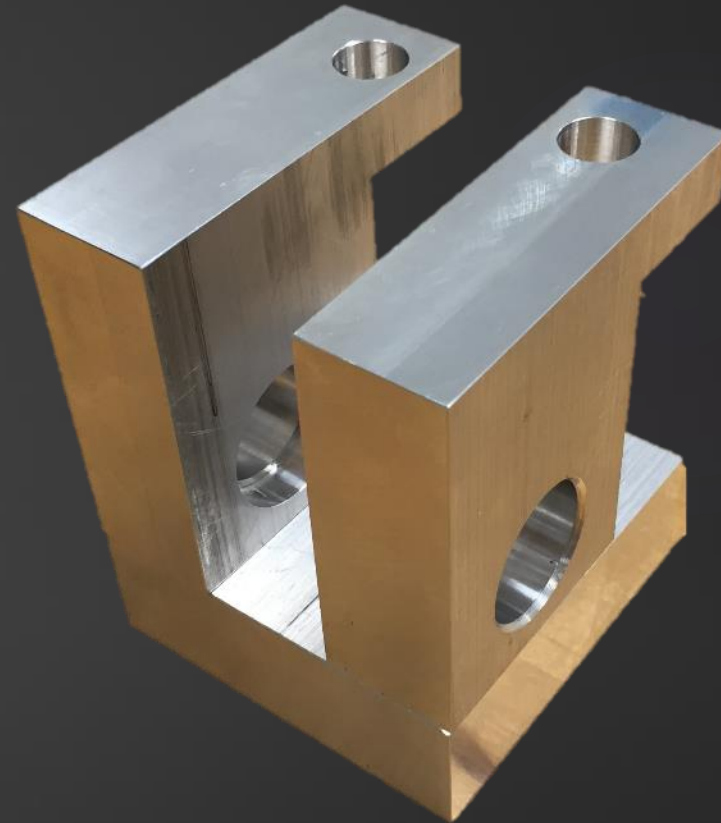
Legend

- 1) Bearings
- 2) Rollers



Follower - Construction

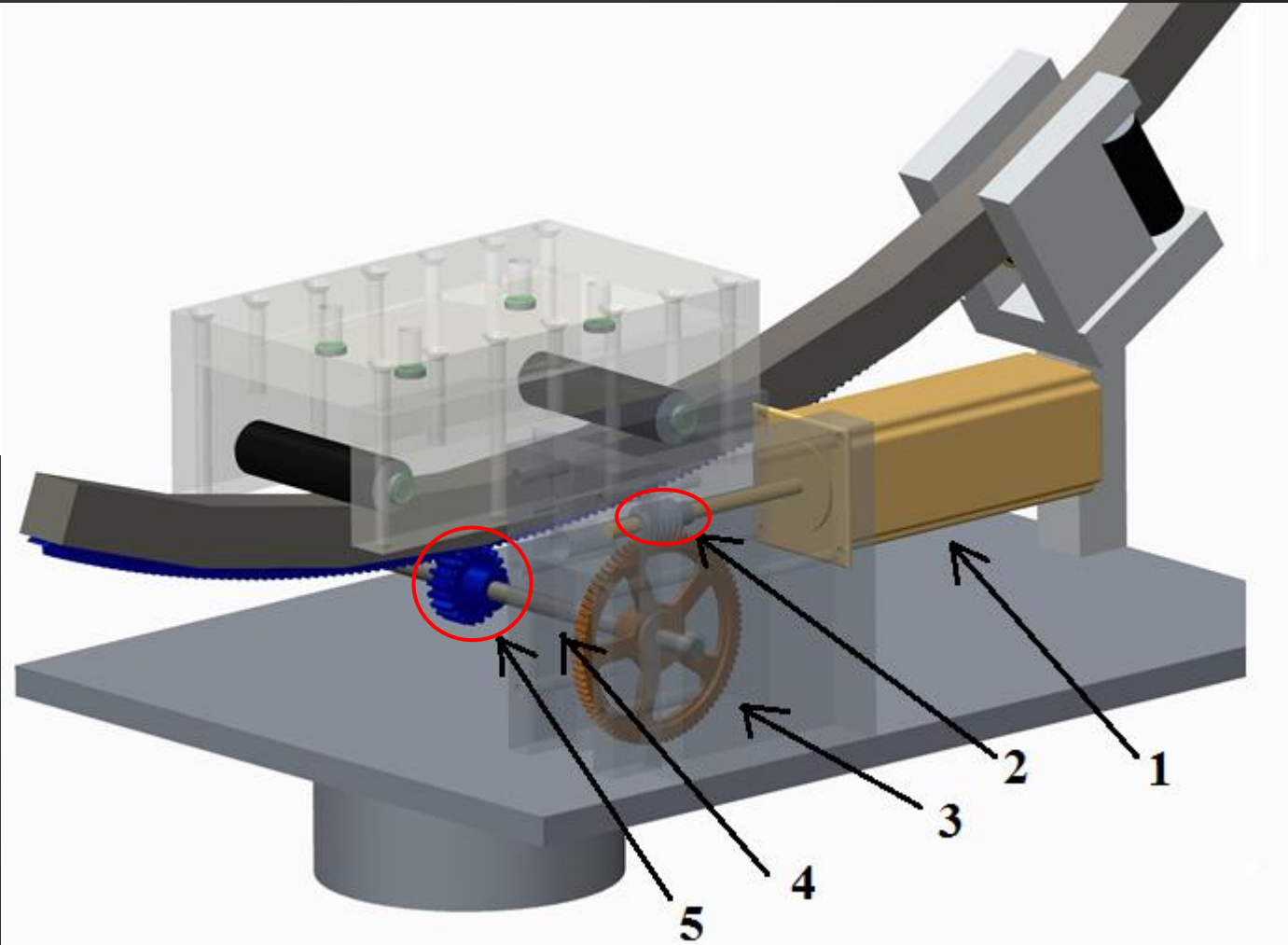
- **Vertical Constraints**
 - Shaft with rollers (arc support)
 - Bearings (shaft support)
- **Horizontal Constraints**
 - C-clips, bearings
 - Housing walls
 - Shafts with rollers (arc support)
- **Construction**
 - 1/4-20 bolts follower and support block



Drive Train - Assembly

Legend

- 1) NEMA 23 Motor
- 2) Worm
- 3) Worm Gear
- 4) Drive Shaft
- 5) Spur Gear



Drive Train - Construction

- **Gears**
 - Set screws and JB weld
- **Drive Shaft**
 - Housing bores with bearings
- **Motor**
 - 4 x 10-24 bolts



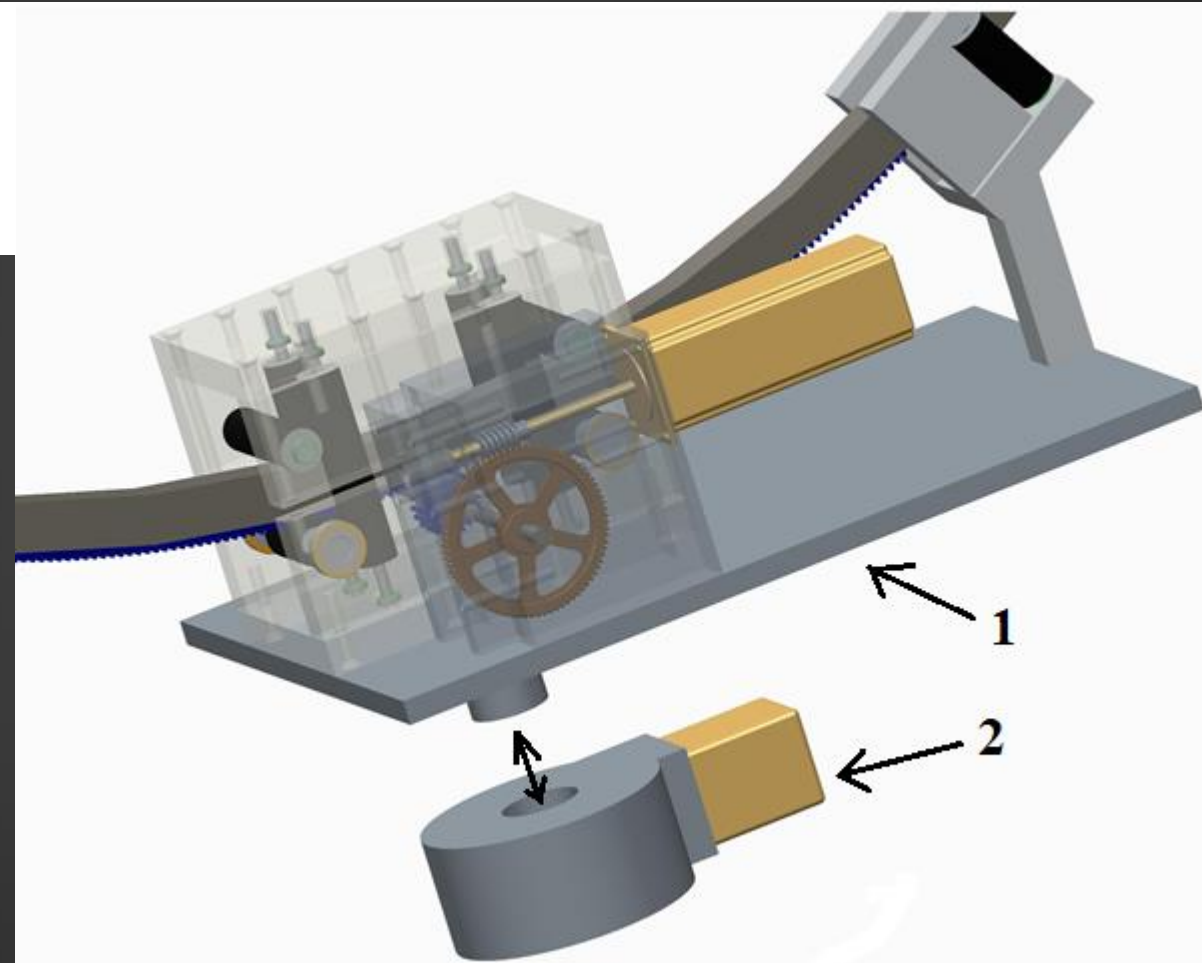
Jacob Kraft

REEF Subsonic WT Articulating Arm

Rotary Table - Assembly

Legend

- 1) Turntable Plate
- 2) Rotary Table Motor

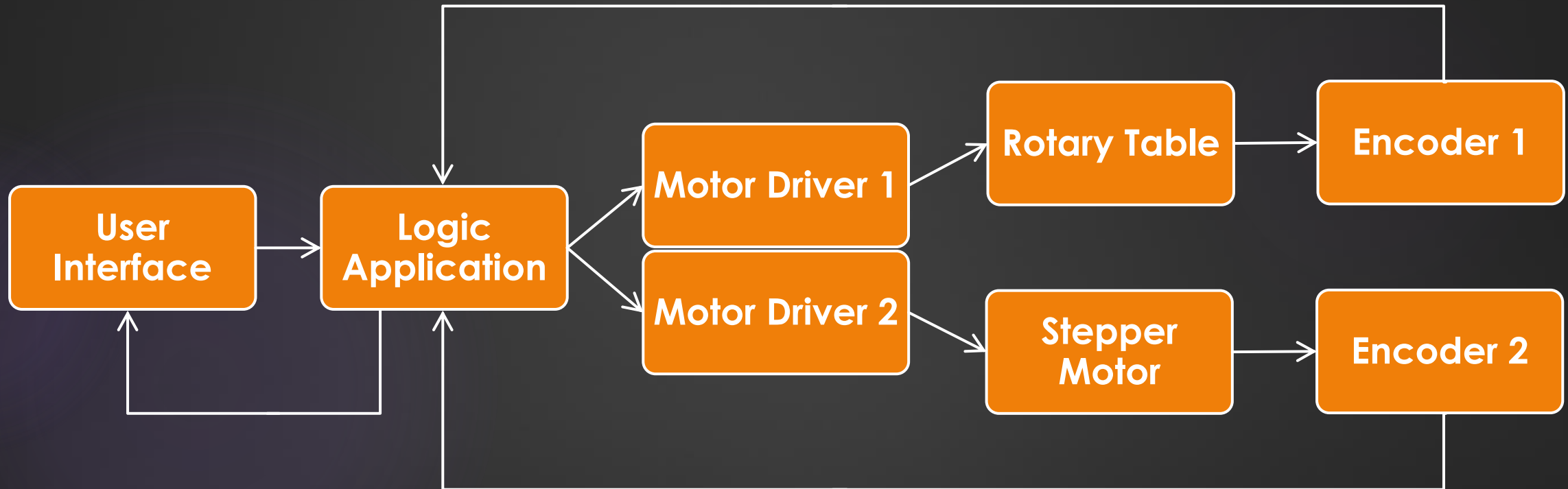


Rotary Table - Construction

- Bolts needed: 10-32 UNF
- Turntable plate
 - Bolted to rotary table surface

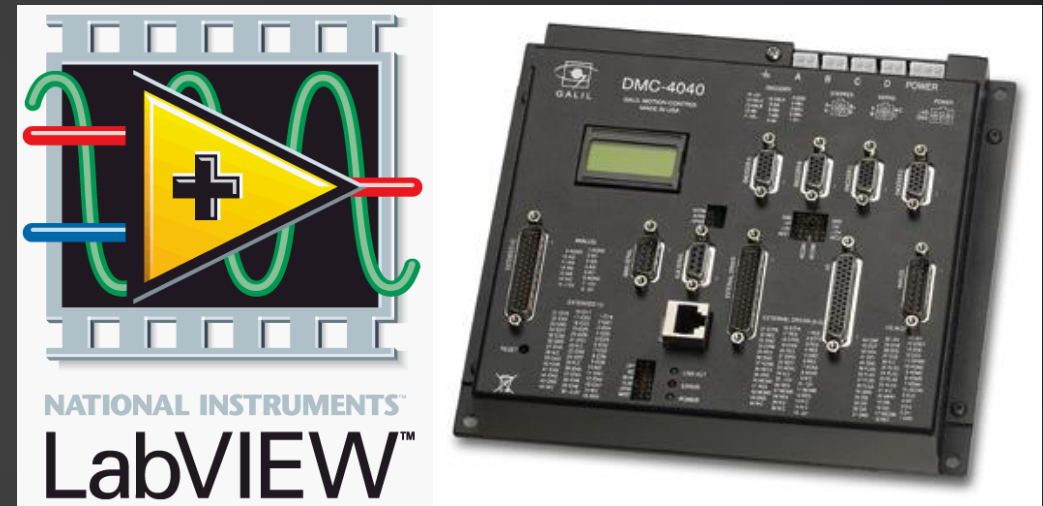


Programming and Circuitry



Programming Communication

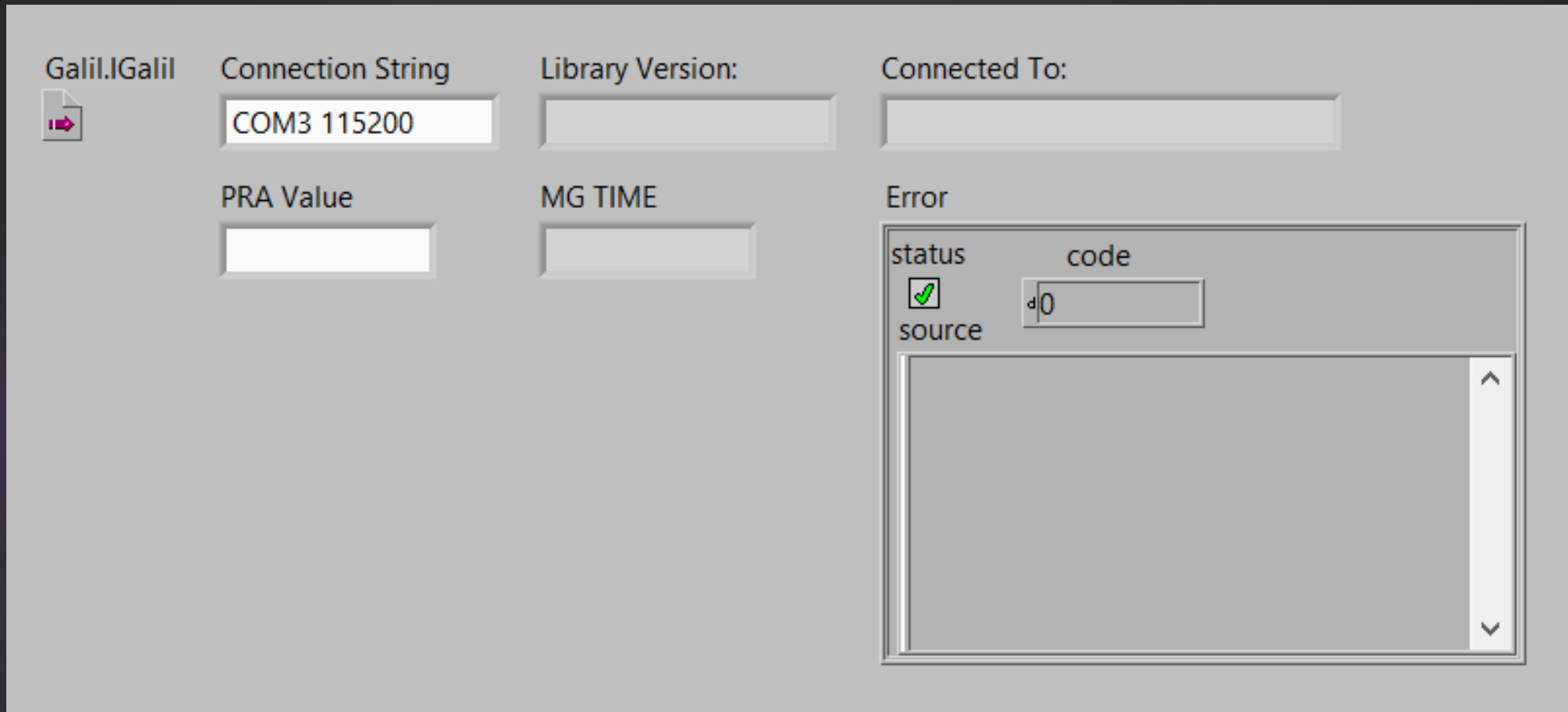
- Galil motion controller uses DMC code
- GalilTools software has an integrated library to use LabVIEW with the Galil controller
- LabVIEW can download programs to the Galil and send commands



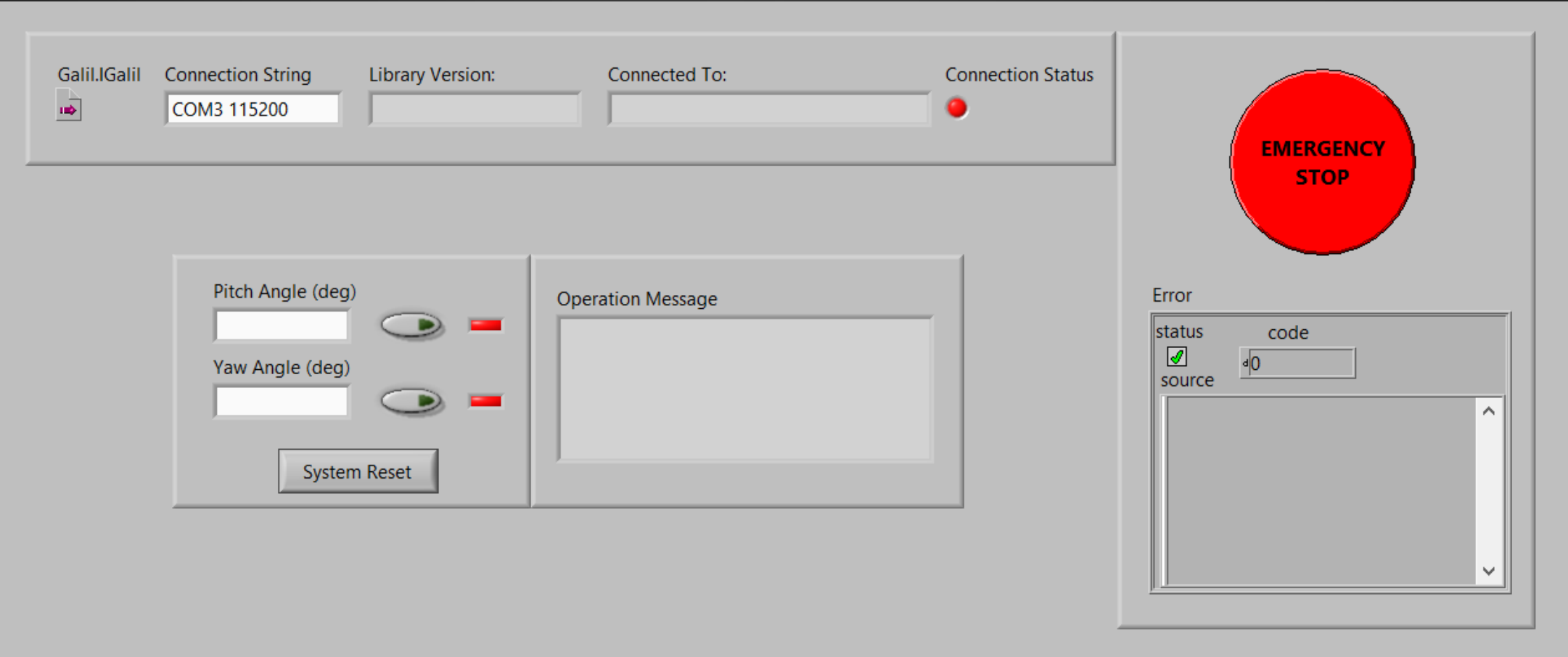
Ideal Logic Configuration

- **User input of angles in LabVIEW**
 - System will have a “reset”
- **Input communication and processing**
- **Motors actuate the arc to the specified angles**
 - New angles will not be able to be entered while the arc is in motion
- **Encoders feedback to controller**
- **Return to LabVIEW interface that actuation is completed**
- **User can enter new angles or reset the system**
- **Emergency stop**

Current LabVIEW Interface

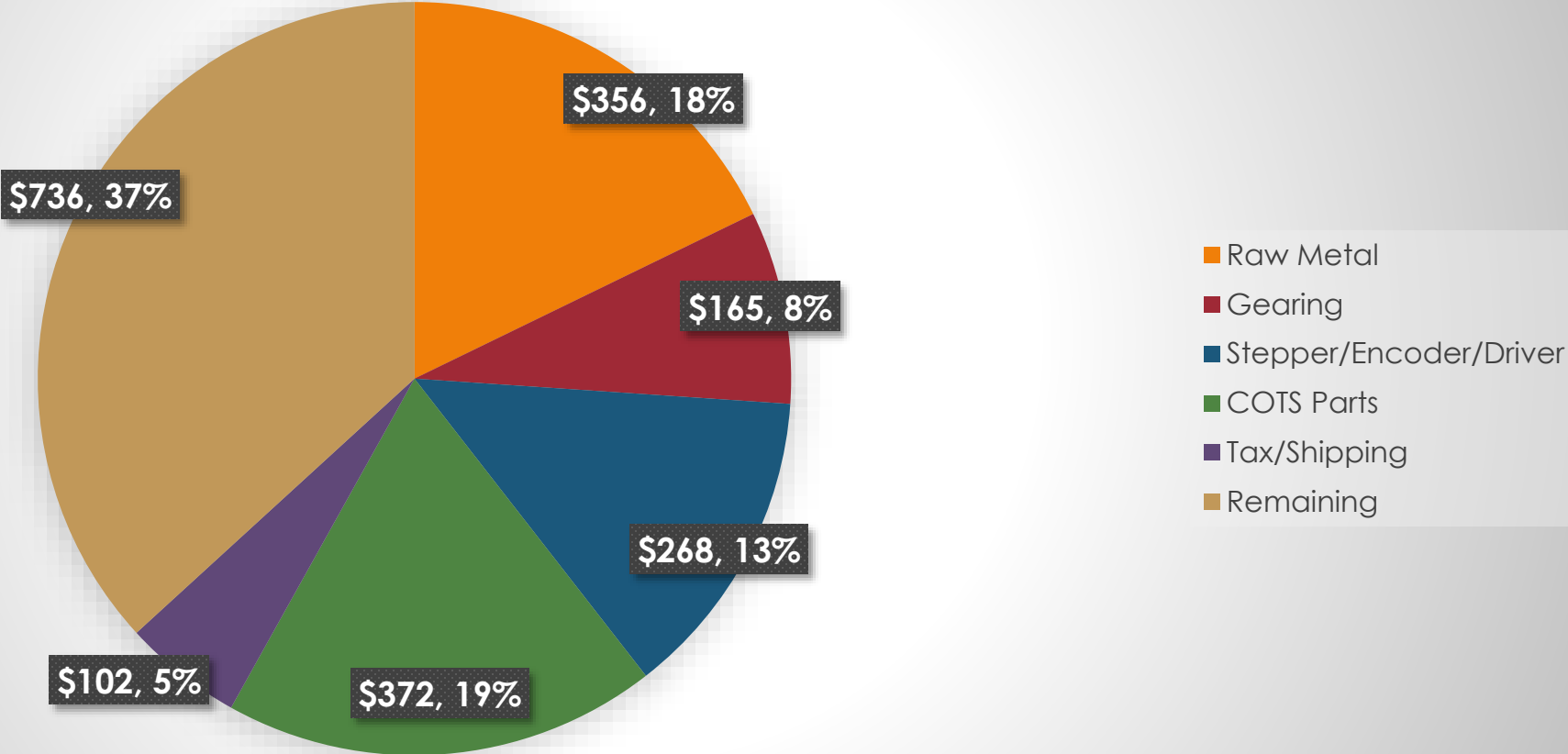


Planned LabVIEW Interface



Project Budget

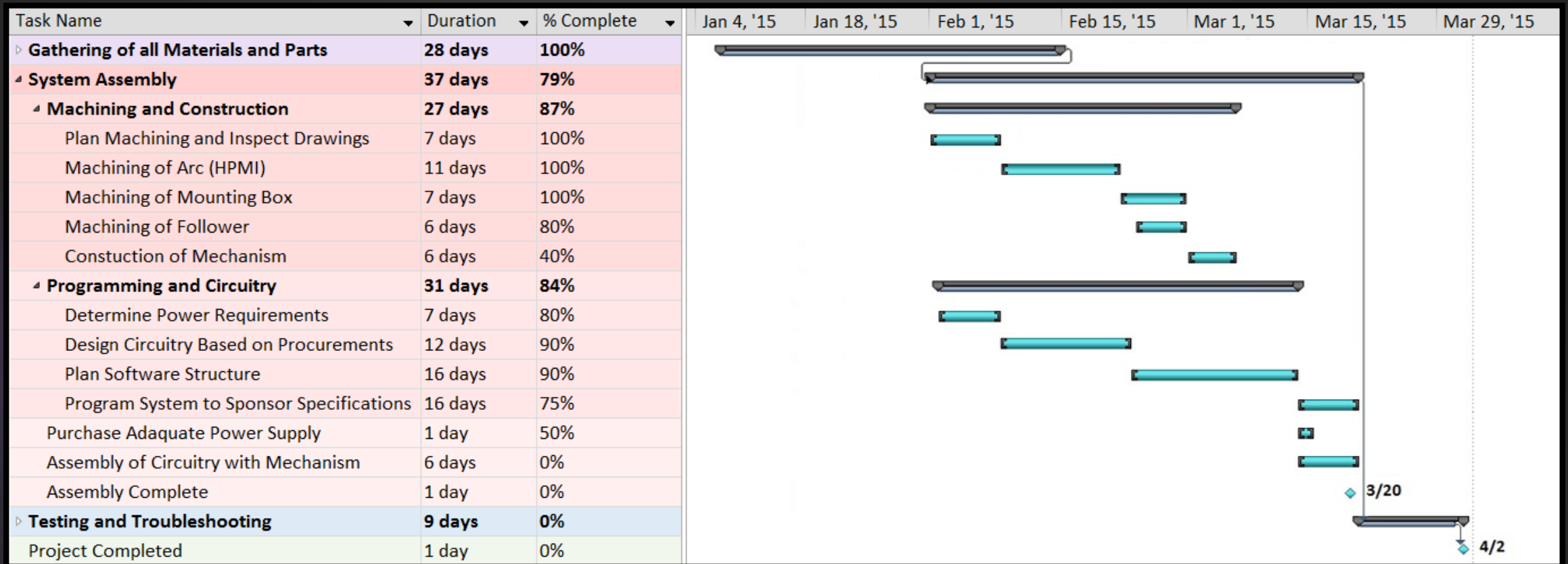
Budget as of 3/19/15



Future Work

- **Programming**
 - User Interface using LabVIEW communication with Galil controller
- **Procurement**
 - Power supply and minor circuitry components
 - Turntable plate material
- **Prototype Assembly**
 - Week of March 23rd, 2015
- **Testing and Troubleshooting**
 - Week of March 23rd, 2015

Spring Schedule





Are there any questions?

Would you like to follow our project?
Check out our website!

http://eng.fsu.edu/me/senior_design/2015/team12/